

SWN

WALL-MOUNTED CABINETS



ZPAS
GROUP

solutions for connections



SWN WALL-MOUNTED CABINETS

TECHNICAL DATA



- Compact wall-mounted cabinets designed for electrical installations.
- In the standard version they are designed for indoor applications.
- Manufactured in 20 dimensions in accordance with the chart below.
- Cabinets of non-standard dimensions or stainless steel options are quoted individually.

REFERENCE CHART

Width [mm]	Depth [mm]	Height [mm]					
		300	400	500	600	800	1000
		Catalogue numbers of standard SWN cabinets					
200	115	WZ-2285-01-01-011	—	—	—	—	—
300	150	WZ-2285-01-02-011	—	—	—	—	—
	210	—	WZ-2285-01-03-011	—	—	—	—
400	150	—	—	—	—	—	—
	210	WZ-2285-01-04-011	WZ-2285-01-05-011	WZ-2285-01-06-011	—	—	—
	250	—	—	—	WZ-2285-01-07-011	—	—
	300	—	WZ-2285-01-08-011	WZ-2285-01-09-011	—	—	—
500	210	—	—	WZ-2285-01-10-011	—	—	—
	250	—	WZ-2285-01-11-011	—	WZ-2285-01-12-011	—	—
	300	—	—	—	WZ-2285-01-13-011	—	—
600	250	—	WZ-2285-01-14-011	—	WZ-2285-01-15-011	WZ-2285-01-16-011	WZ-2285-01-17-011
	300	—	—	—	—	WZ-2285-01-18-011	—
800	300	—	—	—	—	WZ-2285-01-19-011	WZ-2285-01-20-011

TECHNICAL DATA

Material:

Sheet steel

Protection degree:

IP 65 in accordance with EN 60529

Surface finish:

Body, door, blanking plate – Epoxide-polyester thick-texture powder paint in RAL 7035, intended for indoor usage. On customer's request, it is possible to use facade paint with improved resistance to adverse weather conditions and optional use of polyzinc base.

Mounting plate - Al-Zn coated

Note:

On request, the body, door and blanking plate can be made of stainless steel.

SCOPE OF DELIVERY

SWN cabinet:

body, door, mounting plate, 1 or 2 blanking plates (see pages 4-5).

Supplementary accessories (see pages 6-7):

shielding bar, earthing bar, earthing cables, wall brackets, 19" rack.

WALL-MOUNTED CABINETS

SWN

TECHNICAL DATA

DESCRIPTION OF SWN CABINET DESIGN**Body**

- The body of SWN is a tight-welded sheet metal structure. Optimised door light ensures maximum use of available space.
- A multi-folded enclosure aperture protects against dust and moisture even when the door is open.
- In the bottom of the body, there is an opening for a gland plate. Dimensions of the opening depend on cabinet dimensions.
- Inside the body there are self-tapping screws for fixing the mounting plate.
- On the rear side of the body there are cut-outs for mounting the cabinet directly on the wall or by using lifting brackets.

**Door**

- Cabinets are provided with a single-wing door.
- Depending on height, either one or two locks including double-bit insert are used:
 - cabinets up to 400 mm high - one lock in the middle;
 - cabinets from 500 to 1000 mm high - two locks.
- There are hinges fixed to the door; the number depends on cabinet height: from 300 to 600 mm - two hinges, from 800 to 1000 mm - three hinges.
- Interior of the door including sealing gasket and earthing studs.
- Left or right door option.
- Maximum door opening angle 120°.

**Mounting plate**

- Fixed to rear side of the body.
- In cabinets up to 600 mm high the flat mounting plate is used.
- In cabinets 800 or 1000 mm high, a folded mounting plate is used to maintain appropriate stiffness.
- Mounting plate including fixing points for earthing bar.

**Blanking plate - cable entry plate**

- Cabinets with cat. no. from WZ-2285-01-01-011 to WZ-2285-01-10-011 includes one blanking plate installed in cabinet's bottom (see picture).
- Cabinets with cat. no. from WZ-2285-01-11-011 to WZ-2285-01-20-011 includes two blanking plates (upper and bottom), which covers whole surface of upper and bottom plate.
- Fixed by self-tapping screws.
- Includes sealing gasket and earthing stud.
- Gland cable entries available on request.

Earthing and shielding

- The door and the blanking plate including earthing studs.
- Earthing bar and shielding bar (for fixing to the mounting plate) and earthing cables are delivered as supplementary accessories.

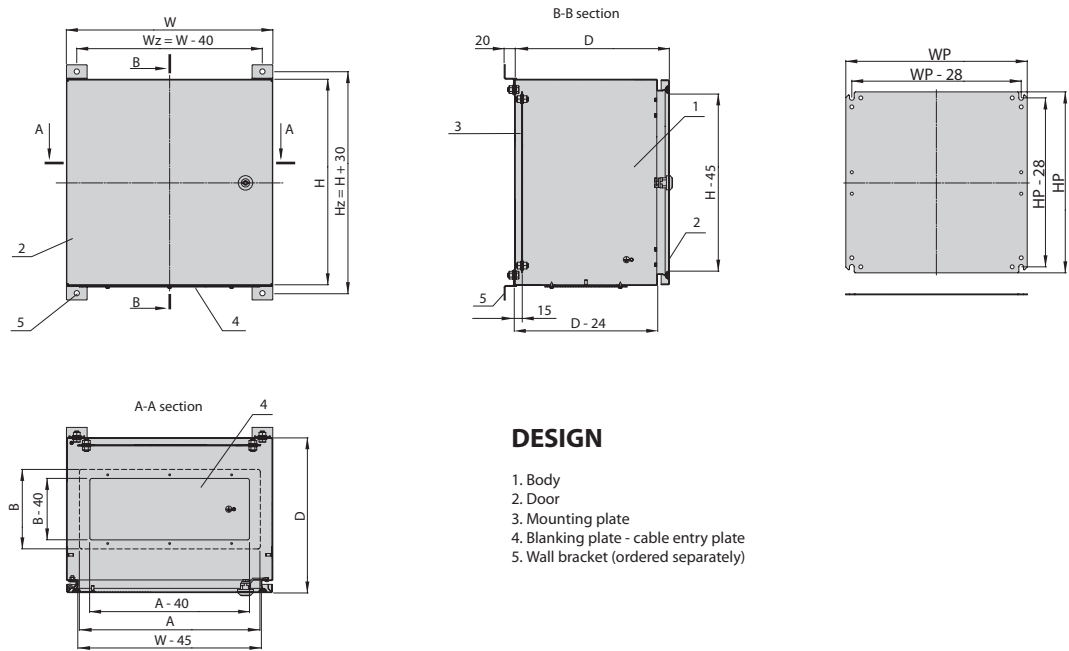
**Blanking plate fixed to the cabinet's bottom**

SWN

WALL-MOUNTED CABINETS

DESIGN

Basic dimensions of SWN cabinets with reference numbers 1-10 (with one blanking plate)
SWN cabinets with catalogue numbers from WZ-2285-01-01-011 to WZ-2285-01-10-011



REFERENCE CHART

Cabinet dimensions [mm]	Height H	300			400					500			600				800			1000	
	Width W	200	300	400	300	400	400	500	600	400	400	500	400	500	500	600	600	600	800	600	800
	Depth D	115	150	210	210	210	300	250	250	210	300	210	250	250	300	250	250	300	300	250	300
Cabinet reference number		1	2	4	3	5	8			6	9	10	7								
Number of locks in the door		1	1	1	1	1	1			2	2	2	2								
Number of hinges in the door		2	2	2	2	2	2			2	2	2	2								
Mounting plate dimensions [mm]	Height HP	251	251	251	351	351	351			451	451	451	551								
	Width WP	151	251	351	251	351	351			351	351	451	351								
Blanking plate dimensions	A	172	172	341	172	341	349			341	349	341	349								
	B	82	82	101	82	101	159			101	159	101	159								

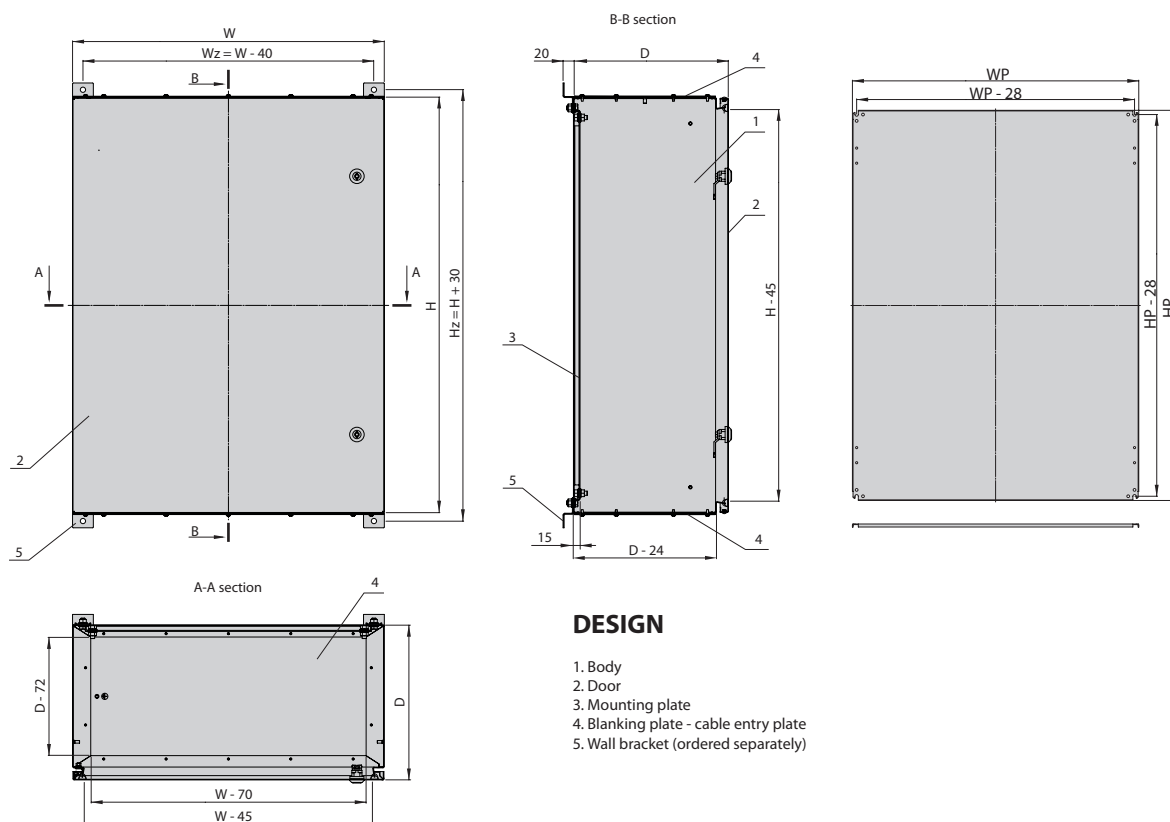
WALL-MOUNTED CABINETS

SWN

DESIGN

Basic dimensions of SWN cabinets with reference numbers 11-20 (with two blanking plates)

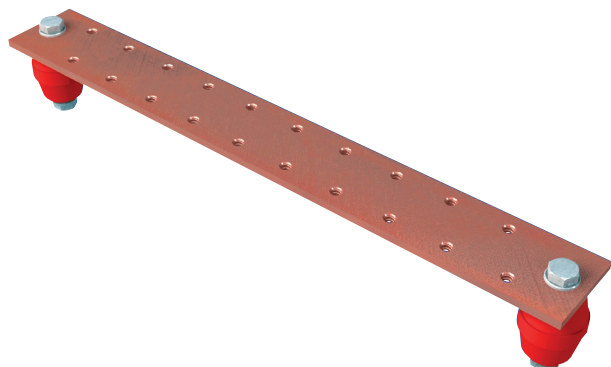
SWN cabinets with catalogue numbers from WZ-2285-11-11-011 to WZ-2285-01-20-011

**REFERENCE CHART**

Cabinet dimensions [mm]	Height H	300			400					500			600				800			1000	
	Width W	200	300	400	300	400	400	500	600	400	400	500	400	500	500	600	600	600	800	600	800
	Depth D	115	150	210	210	210	300	250	250	210	300	210	250	250	300	250	250	300	300	250	300
Cabinet reference number								11	14					12	13	15	16	18	19	17	20
Number of locks in the door								1	1					2	2	2	2	2	2	2	2
Number of hinges in the door								2	2					2	2	2	3	3	3	3	3
Mounting plate dimensions [mm]	Height HP							351	351					551	551	551	751	751	751	951	951
	Width WP							451	551					451	451	551	551	551	751	551	751

SWN WALL-MOUNTED CABINETS

SUPPLEMENTARY ACCESSORIES



Shielding bar

Fixed to the mounting plate by insulators (fixing points are made during assembly).
Threaded holes M5 for fixing wires.

Material:

Copper bar 30 x 4 mm.

Scope of delivery:

Shielding bar with 2 insulators and screws for fixing on the mounting plate.

For cabinets width [mm]	Length of the bar [mm]	Package	Catalogue number
200 - 400	130	1 pc.	WZ-2285-10-01-000
500 - 800	230	1 pc.	WZ-2285-10-02-000



Earthing set

Consists of an earthing bar and 2 earthing cables.

Earthing bar

- Fixed to mounting plate by distance pins (standard mounting plate includes fixing points for earthing bar).
- Threaded holes M5 for fixing wires.

Earthing cables

- Insulated copper wires for joining removable elements of the cabinet with earthing bar or directly with cabinet's body.
- With contact eyes.

Material:

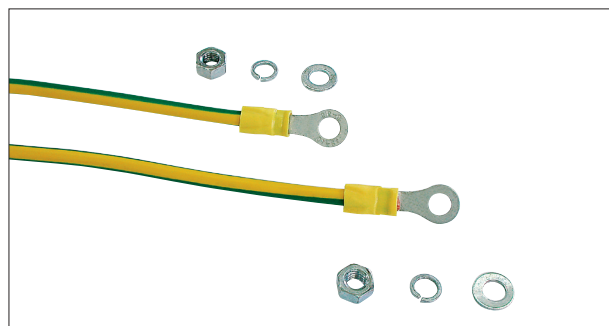
Galvanised steel rail 30 x 4 x 170 mm

Copper cables, full section 6 mm²

Scope of delivery:

Set: earthing bar 170 mm long with distance pins, washers and nuts for fixing to mounting plate, 2 grounding cables 300 mm long, fixing accessories.

Package	Catalogue number
1 set	WZ-2285-13-00-000



WALL-MOUNTED CABINETS

SWN

SUPPLEMENTARY ACCESSORIES

Set of wall brackets for wall mounting

Wall brackets are fixed to openings in the rear side of the cabinet horizontally or vertically.

Diameter of openings: 10 mm.

Spacing between rear side of the cabinet and the wall: 20 mm.

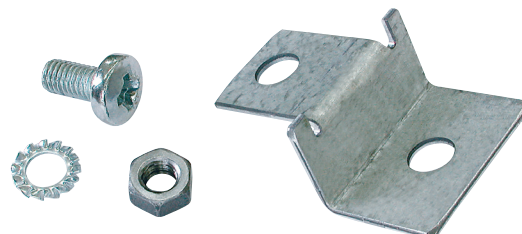
1 set = 4 brackets per cabinet.

Material:

Al-Zn coated sheet steel.

Scope of delivery:

Set: 4 wall brackets with screws, nuts and washers for fixing to the rear side.



Package	Catalogue number
1 set = 4 pcs.	WZ-2285-14-00-000

19" rack for SWN cabinets

It is used for mounting 19" devices inside SWN cabinets with a width of 600 mm.

It consists of 2 mounting profiles or mounting angles and 4 brackets with fixing accessories.

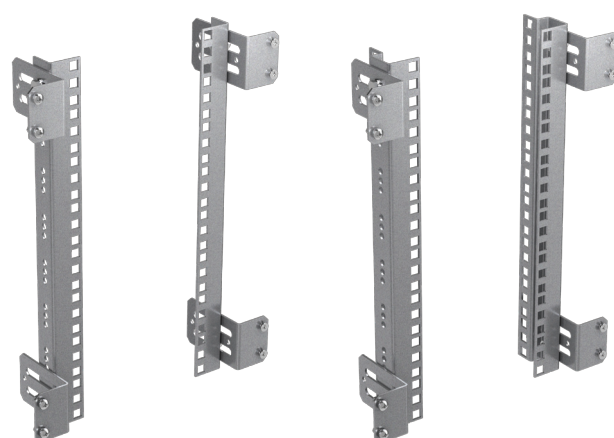
For installing the rack inside the cabinet, the openings intended also for mounting hinges are used.

Material:

Al-Zn-coated steel sheet

Scope of delivery:

2 mounting profiles or mounting angles, 4 brackets with fixing accessories.

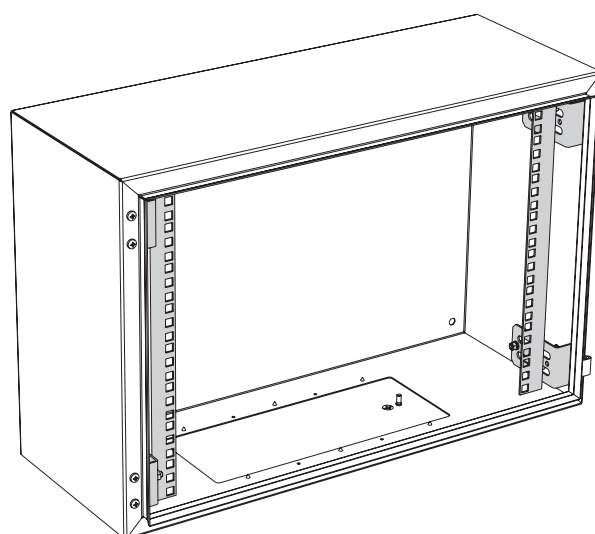


Rack made of 19" mounting angles

Rack made of 19" mounting profiles

Product name	For SWN cabinet		Usable height [U = 44.45 mm]	Catalogue number
	Width [mm]	Height [mm]		
Rack made of 19" mounting angles	600	400	8 U	WZ-5922-02-01-000
		600	12 U	WZ-5922-02-02-000
		800	17 U	WZ-5922-02-03-000
		1000	21 U	WZ-5922-02-04-000
Rack made of 19" mounting profiles	600	400	8 U	WZ-5922-02-05-000
		600	12 U	WZ-5922-02-06-000
		800	17 U	WZ-5922-02-07-000
		1000	21 U	WZ-5922-02-08-000

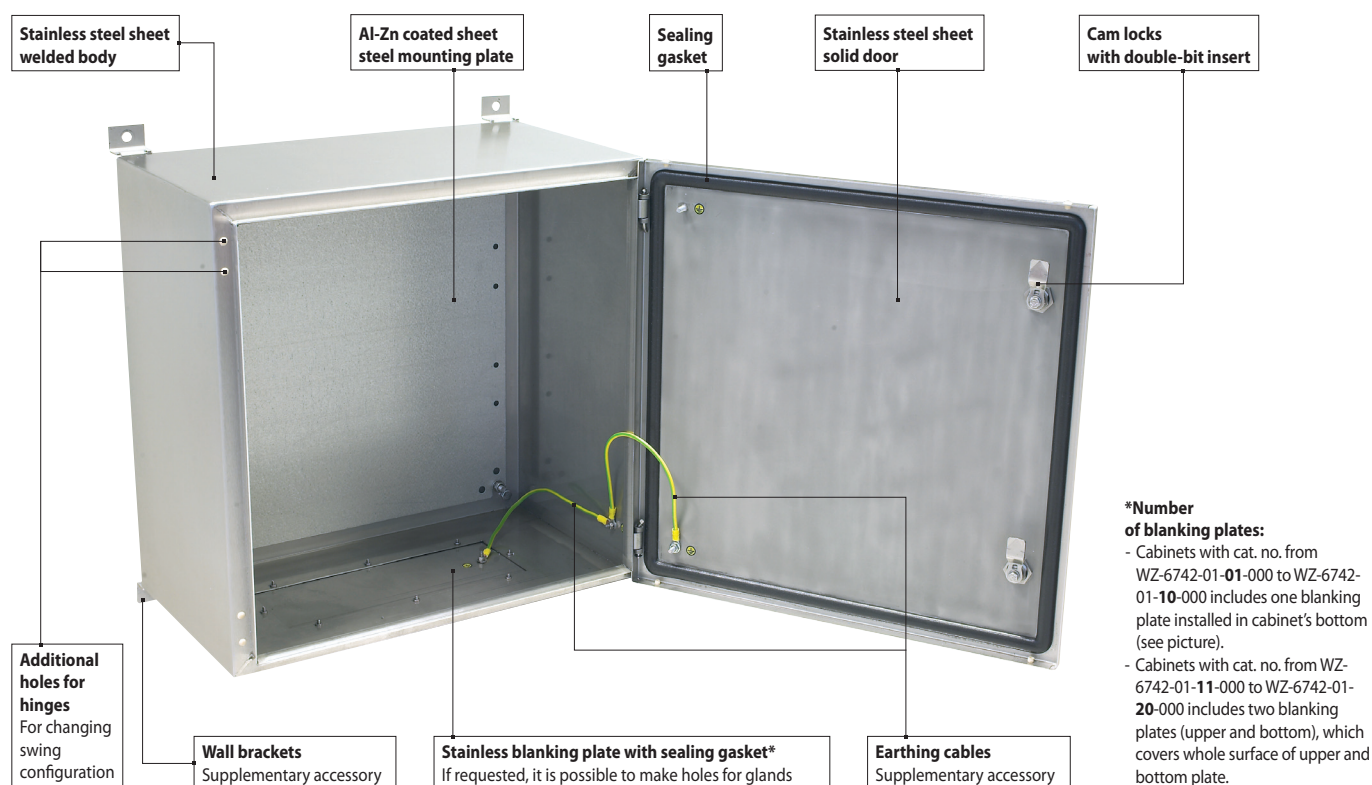
Package: 1 set



SWN cabinet's body with installed rack made of 19" mounting angles

SWN Inox STAINLESS STEEL WALL-MOUNTED CABINETS

- Compact, versatile, single-door wall cabinets for installation of electrical equipment to be protected against unauthorized access, dust and moisture.
- Intended for use in outdoor conditions in corrosion-aggressive environment or wherever extra hygiene is required.
- Design and reference chart of SWN Inox stainless cabinets is fully compatible with standard SWN cabinets produced by ZPAS.



Material:

Body, door, blanking plate, wall brackets

- 1.4301 stainless steel as per EN 10088, other grade possible on demand

Mounting plate

- Al-Zn coated sheet steel

Protection degree:

IP 65 in accordance with EN 60529

External surface finish:

K180 grinding

Cabinet's scope of delivery:

body, door, blanking plate, mounting plate.

Supplementary accessories ordered separately:

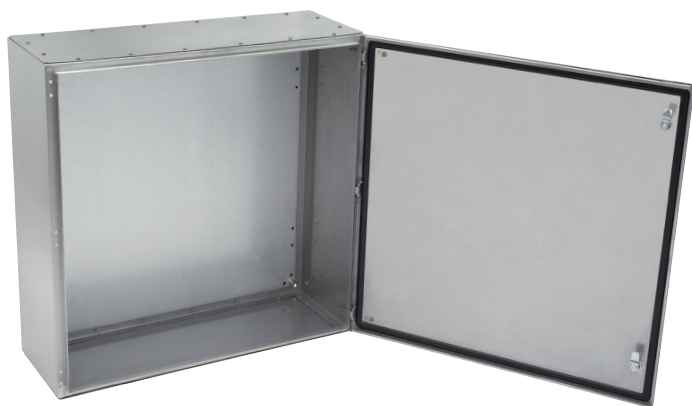
shielding bar,
earthing bar,
earthing cables,
wall brackets, 19" rack
(see pages 6-7).

REFERENCE CHART

Width [mm]	Depth [mm]	Height [mm]					
		300	400	500	600	800	1000
		Catalogue numbers of standard versions of SWN Inox stainless steel cabinets					
200	115	WZ-6742-01-01-000	—	—	—	—	—
300	150	WZ-6742-01-02-000	—	—	—	—	—
	210	—	WZ-6742-01-03-000	—	—	—	—
400	150	—	—	—	—	—	—
	210	WZ-6742-01-04-000	WZ-6742-01-05-000	WZ-6742-01-06-000	—	—	—
	250	—	—	—	WZ-6742-01-07-000	—	—
	300	—	WZ-6742-01-08-000	WZ-6742-01-09-000	—	—	—
500	210	—	—	WZ-6742-01-10-000	—	—	—
	250	—	WZ-6742-01-11-000	—	WZ-6742-01-12-000	—	—
	300	—	—	—	WZ-6742-01-13-000	—	—
600	250	—	WZ-6742-01-14-000	—	WZ-6742-01-15-000	WZ-6742-01-16-000	WZ-6742-01-17-000
	300	—	—	—	—	WZ-6742-01-18-000	—
800	300	—	—	—	—	WZ-6742-01-19-000	WZ-6742-01-20-000

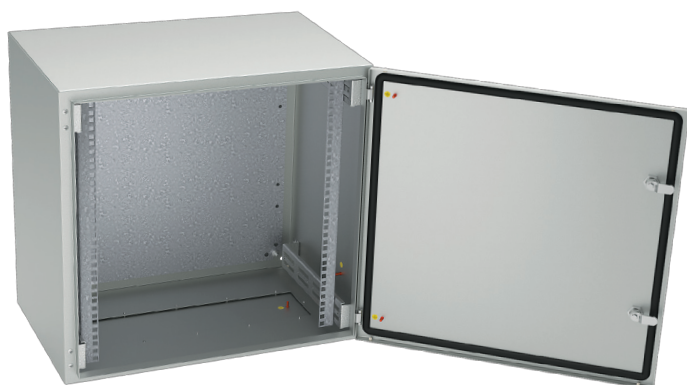
Note: Cabinet body and door can be additionally powder painted in RAL 7035. When ordering this version of the cabinet, replace the last three digits of the cabinet's catalogue number with **011**.

STAINLESS STEEL WALL-MOUNTED CABINETS

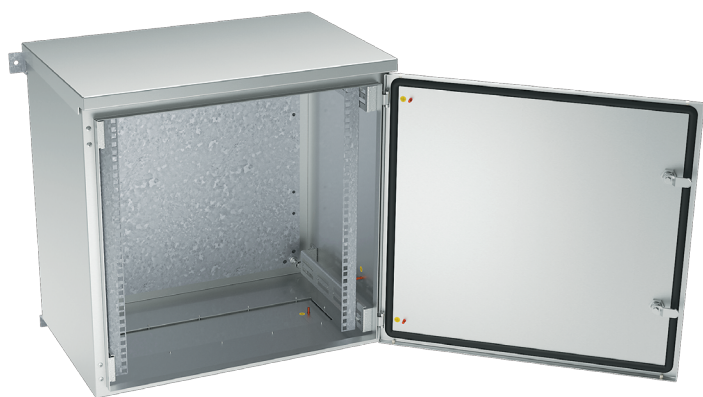
SWN Inox

SWN Inox cabinet 800 x 800 x 300 mm, cat. no. WZ-6742-01-19-000, two blanking plates (upper and bottom)

IP65 CABINETS WITH 19" RACK - CUSTOMIZED VERSIONS

SWN^{19"}

SWN IP65 cabinet with mounting plate and 19" rack, powder painted in RAL 7035 (light grey).
External dimensions: height 575 mm, width 600 mm, depth 400 mm. Usable height 12 U. Versions with solid and glazed doors.

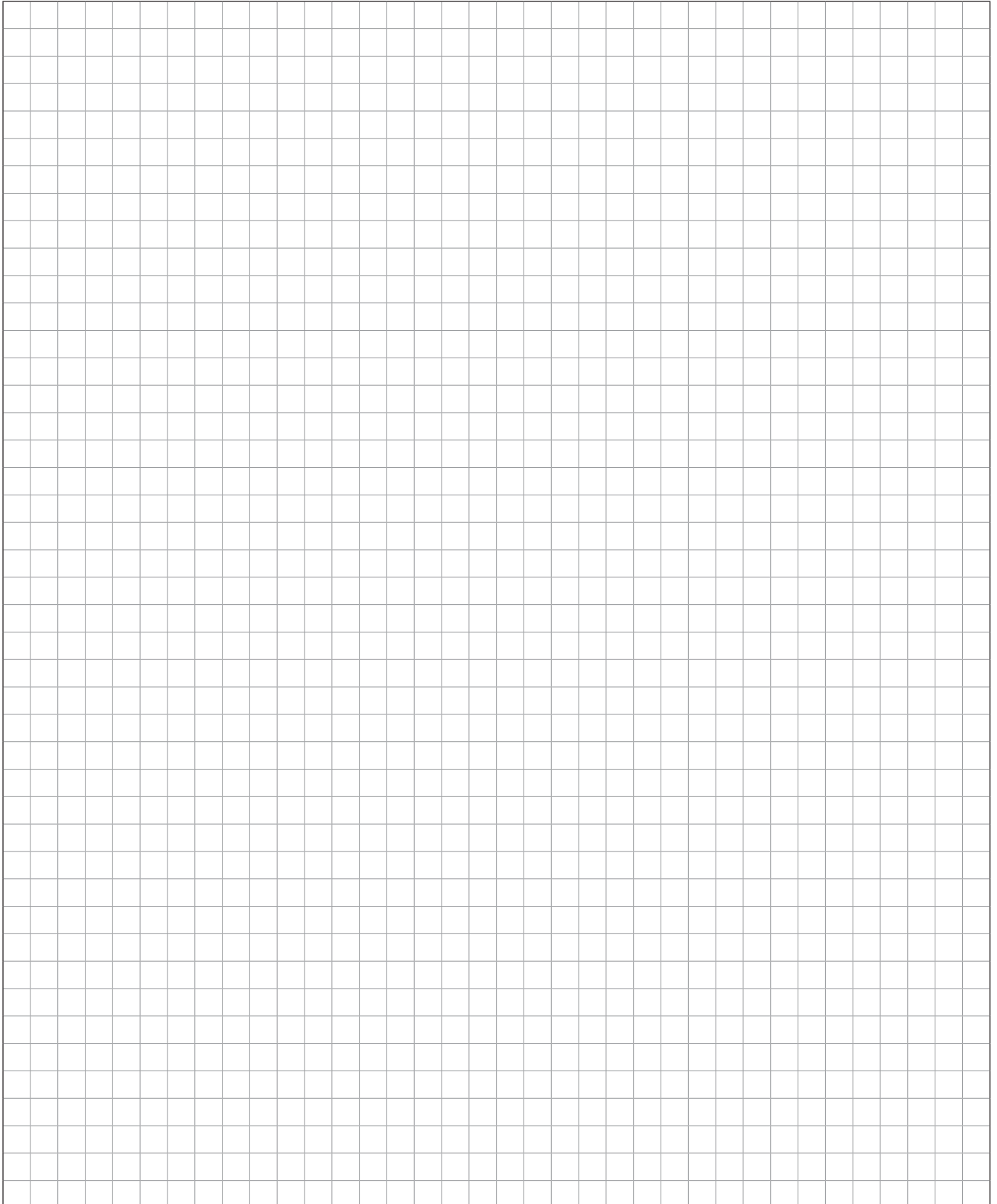


SWN Inox IP65 cabinet with mounting plate, 19" rack and rain hood.
External dimensions: height (with hood) 606 mm, width 600 mm, depth 400 mm. Usable height 12 U

NOTES

This image shows a full page of blank graph paper. The grid consists of small, uniform squares formed by thin, light gray lines. There are no margins, text, or other markings on the page.

NOTES





ZPAS

We reserve the right to modernise and modify our products.
Technical modifications shall not affect product functionality.
Misprints and errors of content that may be found in this
catalogue may not be used as a basis for complaints.

Edition: 06.2016 EN

ZPAS S.A.

PRZYGÓRZE 209 · 57-431 WOLIBÓRZ · POLAND

PHONE: +48 748 720 100 · FAX: +48 748 724 074

ZPAS

INFO@ZPAS.PL · WWW.ZPAS.PL