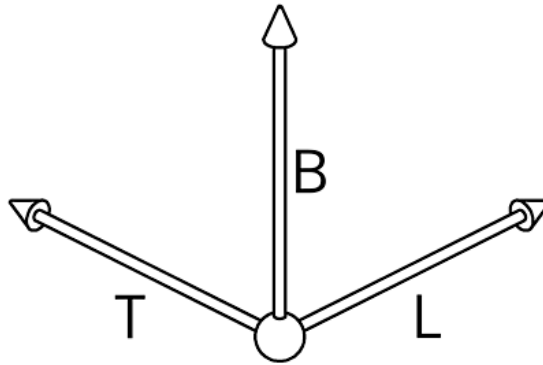
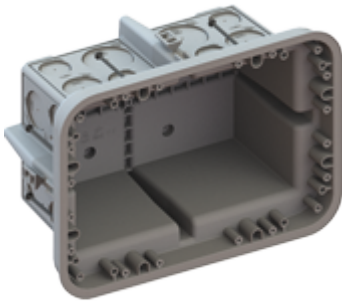


# Transition box



- **Material:** Polyethylene
- **Properties:** non-halogen
- **Processing temperature:** -5°C / + 60°C
- for wood and steel formwork in on-site mixed concrete as well as flush-mounting (masonry) installations
- for vertical formwork attached with adhesive, the casings must be secured with the telescopic support 9957
- Optional accessories: plaster cover, end cover, Prefix® installation set
- **Length:** 250 mm
- **Width:** 180 mm
- **Depth:** 120 mm
- **Tube entries up to M25:** 12
- **Tube entries up to M32:** 8
- **Tube entries up to M40:** 4
- **Extensive pull-out apertures:** 8
- **Intake for Prefix:** 4
- **Number of nails:** 8

## Art. No.: 9916

- **Inner packaging:** ST
- **Outer packaging:** 10 ST
- **Individual net weight:** 353,380 G
- **Single volume:** 4,118 L
- **EAN:** 7611614261744