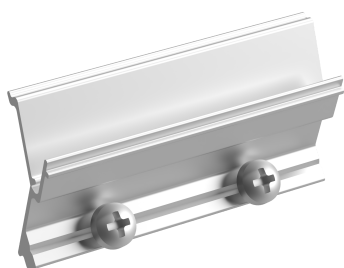


WGX-A Jointing / earthing piece alu

Reference STA520085



Activity
Product family
Brand
Range

Installation systems
Trunking accessories
Stago
WGX-A

Base

Activity	Installation systems
Product family	Trunking accessories
Brand	Stago
Range	WGX-A
GTIN	7321679003271

Commercial and Web

Short description	WGX-A Jointing / earthing piece alu
Medium description	Jointing piece, Stago WGX-A, to join two pieces of aluminium trunking, earth connection screws included, aluminium
Length	100 mm
Width	40 mm
Height	1 mm
Material	Aluminium

ETIM (EC002438-Potential equalization for wall duct)

Model (EF000010)	Universal
------------------	-----------

Logistic

Pack 1 type	Bag
Quantity pack 1	2

Weight pack 1	0.03 kg
Length pack 1	110 mm
Width pack 1	41 mm
Height pack 1	1 mm
Pack 4 type	Pallet
Quantity pack 4	1000
Length pack 4	1200 mm
Width pack 4	800 mm
Height pack 4	340 mm
Customs code	73089098
Net weight	0.02 kg
Country of origin	SE

Certification

ETIM class	EC002438
------------	----------

Status product

Product status	Commercialized
----------------	----------------

Environmental

GWP Total A1-A3	0.027 kgCO2e
-----------------	--------------

For the latest information check <http://wibe-group.com/cable-support-systems/installation-systems/trunking/installation-trunking/accessories/jointing-earthing-piece-alu>