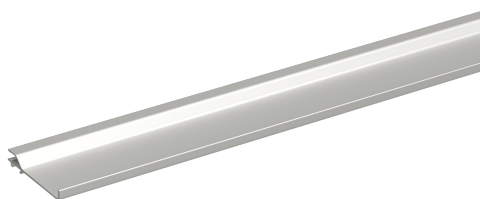


WGX-A Cable shelf alu 72mm deep

Reference STA520034



Activity
Product family
Brand
Range

Installation systems
Trunking accessories
Stago
WGX-A

Base

Activity	Installation systems
Product family	Trunking accessories
Brand	Stago
Range	WGX-A
GTIN	7321679003387

Commercial and Web

Short description	WGX-A Cable shelf alu 72mm deep
Medium description	Cable shelf, Stago WGX-A, single shelf, for 72 deep installation trunking, aluminium unpainted
Length	500 mm
Width	62 mm
Height	12 mm
Material	Aluminium

ETIM (EC001009-Separation plate for wall duct)

Model (EF000010)	1-fold
Suitable for duct depth (EF006398)	72 mm
Type of fastening (EF002442)	Snap on
Length (EF001438)	500 mm
Material (EF002169)	Aluminium
Material quality (EF001257)	*
Halogen free (EF000025)	Yes

Anti (EF023790)	No
Operating temperature (EF001742)	-20 - 60 °C
Impact strength (EF004293)	*

Logistic

Pack 1 type	Carton
Quantity pack 1	10
Weight pack 1	1.5 kg
Length pack 1	530 mm
Width pack 1	100 mm
Height pack 1	70 mm
Pack 4 type	Pallet
Quantity pack 4	750
Length pack 4	1200 mm
Width pack 4	800 mm
Height pack 4	535 mm
Customs code	76109090
Net weight	0.15 kg
Country of origin	SE

Certification

ETIM class	EC001009
------------	----------

Status product

Product status	Commercialized
----------------	----------------

Environmental

GWP Total A1-A3	0.315 kgCO2e
-----------------	--------------

For the latest information check <http://wibe-group.com/cable-support-systems/installation-systems/trunking/installation-trunking/cable-shelves/cable-shelf-alu-72mm-deep-1-5m-unpainted>