

Light data

Luminous flux
960 lm/m

Tunable white
2,200–4,000 K

Dimming
0.1–100 %

RA
90

SDCM
3

L70/B50
60,000 h
T_a 35 °C

Light source
LED

Technical data

Mains power
24 V DC (3-wire common anode +)
White cable: 4,000 K
Yellow cable: 2,200 K

IP rating
IP66

Insulation class
Class III

Permissible ambient temperature
-25 to +35 °C

Maximum power consumption
9.6 W/m

LST-01-2M: 19 W
LST-01-4M: 38 W
LST-01-6M: 58 W*

Energy efficiency class
F

T_c point
Max. 65 °C

Cable area
0.34 mm²
Max. 2 A*

*When using strips longer than 5.5 m,
the product should be connected to the power
supply in both ends to meet this requirement.

RISK OF INJURY TO PERSON OR PROPERTY

All work on the appliance must be carried out by
an authorized electrician. National laws and
regulations must be followed.

Support

In the event of any technical questions,
please contact our customer service:
support@plejd.com | +46 (0) 10 203 89 91

Plejd AB, Kroksläatts Fabriker 27A
431 37 Mölndal, Sweden



Important information

Do not use the product if it has visible
signs of damage.

The light source of this luminaire is
not replaceable; when the light source
reaches its end of life the whole luminaire
shall be replaced.

The external flexible cable or cord of this
luminaire cannot be replaced. If the cord is
damaged, the luminaire shall be destroyed.



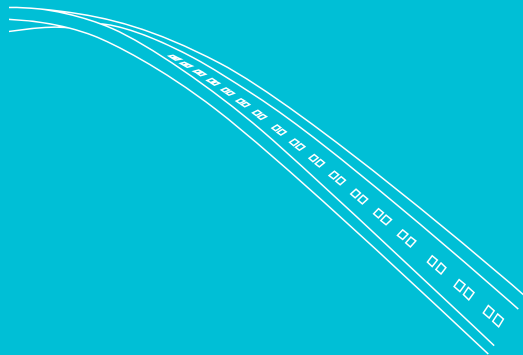
Disposal and recycling

This electrical product should not be
disposed of together with other household
waste. Contact your local recycling center
for guidance on electrical and electronic
equipment disposal.

EN

Plejd

LST-01 INSTALLATION MANUAL



Further information can be found
in the **Plejd app** or at **plejd.com**

Only use with recommended driver

Intended for use with Plejd's tunable driver LED-75. With LED-75, the strip's color temperature and dimming level can be controlled wirelessly using other products from Plejd.

NOTE!

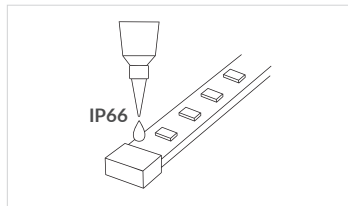
Make sure to **shut off the main power** before installing the LST-01.

⚠ Important information

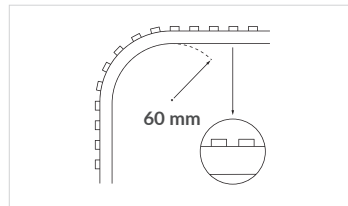
Read before installing the product.

- To ensure that your installation is safe and correct, please read the technical specifications and follow the instructions in this manual.
- Do not exceed the recommendations for the current in the cable. Max. 2 A (see technical data).
- To avoid overheating, ensure the LED Strip does not overlap.
- Do not switch on the LED Strip when it is rolled up.
- The product must not be exposed to direct sunlight.
- Do not use the product if it has visible signs of damage.
- To reduce the risk of strangulation the flexible wiring connected to this luminaire shall be effectively fixed to the wall if the wiring is within arm's reach.
- Recommended tape application temperature: +18 to 25 °C. The application surface should be clean and free of grease.

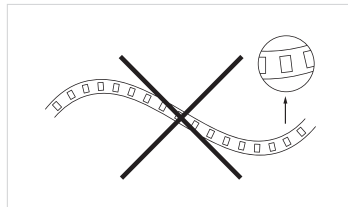
Glue the end caps with silicone glue to maintain the IP rating (if cut)



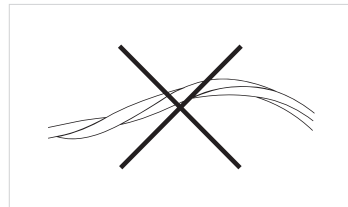
OK bending radius in profiles



Do not bend sideways



Do not twist the strip



Installing the product

LST-01 can be installed with the provided double-sided tape in any profile with a diffuser that fits 13 mm wide strips.

When installed outside of a metal profile, make sure that the mounting surface is non-porous and that mounting clips (not included) are used in combination with the double-sided tape.

When installing make sure to choose the right load setting. Follow the instructions in the Plejd app.

Connect the wires to LED-75 according to the markings on the driver:

Red cable: +
White cable: Cold -
Yellow cable: Warm -

If the product needs to be cut to length, the strip shall only be cut at the intended 50 mm marks, across the exposed copper pads.

