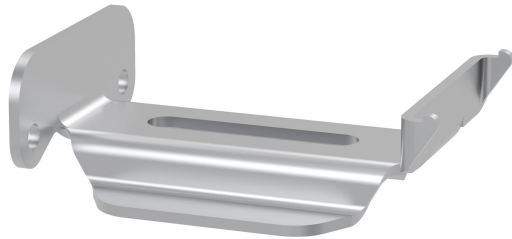


Support bracket W20-100 PG

Reference 721943



Activity
Product family
Brand

Cable support systems
Support system
Wibe

Commercial and Web

Short description	Support bracket W20-100 PG
Medium description	Wibe - support bracket W20-100 - steel pre-galvanized
Keyword	721943, Wibe Cable Trays
Material	Steel
Material type or surface treatment	Pre-galvanized
Corrosion class	C1; C2

Base

Activity	Cable support systems
Product family	Support system
Brand	Wibe
GTIN	7321677219438

ETIM (EC000022-Bracket for cable support system)

Length (EF001438)	* mm
Width (EF000008)	100 mm
Height (EF000040)	36 mm
Suitable for cable management system width (EF008339)	* mm
Model (EF000010)	Wall bracket
Angle (EF005434)	* °
Load bearing capacity (EF002918)	* kN
Suitable for circuit integrity (EF007806)	No
Material (EF002169)	Steel
Material quality (EF001257)	*

Surface protection (EF000139)	Continuously galvanized
Colour (EF000007)	*
RAL (EF000116)	*

Logistic

Pack 1 type	Each
Quantity pack 1	1
Weight pack 1	0.13
Length pack 1	100
Width pack 1	65
Height pack 1	33
GTIN pack 1	7321677219438
Pack 4 type	Pallet
Quantity pack 4	400
Weight pack 4	82
Length pack 4	1200
Width pack 4	800
Height pack 4	340
Customs code	73089059
Country of origin	SE

Certification

ETIM class	EC000022
REACH declaration	No
REACH date	6/24/2020 10:00:00 PM +00:00

Status product

Product status	Commercialized
----------------	----------------

For the latest information check <http://wibe-group.com/cable-support-systems/cable-trays/wibe-cable-trays/accessories/support-bracket-w20-100-pre-galv>