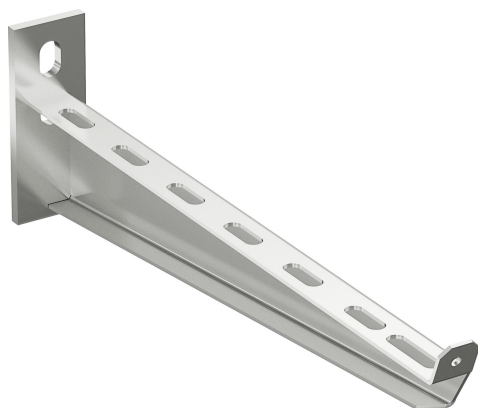


Cantilever arm 50-200 SS316L

Reference 725620



Activity
Product family
Brand

Cable support systems
Support system
Wibe

Commercial and Web

Short description	Cantilever arm 50-200 SS316L
Medium description	Wibe - cantilever arm 50-200 - stainless steel AISI316L
Keyword	725620, Wibe Cable Trays
Width	200
Material	Stainless steel
Material type or surface treatment	AISI316L
Corrosion class	C5-M

Base

Activity	Cable support systems
Product family	Support system
Brand	Wibe
GTIN	7321677256204

ETIM (EC000022-Bracket for cable support system)

Length (EF001438)	* mm
Width (EF000008)	40 mm
Height (EF000040)	85 mm
Suitable for cable management system width (EF008339)	200-200 mm
Model (EF000010)	Wall- and profile console

Angle (EF005434)	90-90 ° °
Load bearing capacity (EF002918)	* kN
Suitable for circuit integrity (EF007806)	No
Material (EF002169)	Stainless steel
Material quality (EF001257)	Stainless steel 316 (1.4401)
Surface protection (EF000139)	Other
Colour (EF000007)	*
RAL (EF000116)	*

Logistic

Pack 1 type	Each
Quantity pack 1	1
Weight pack 1	0.3
Length pack 1	250
Width pack 1	40
Height pack 1	85
Pack 4 type	Pallet
Quantity pack 4	300
Weight pack 4	120
Length pack 4	1200
Width pack 4	800
Height pack 4	340
Customs code	73089059
Country of origin	SE

Certification

ETIM class	EC000022
REACH declaration	No
REACH date	3/7/2021 11:00:00 PM +00:00

Status product

Product status	Commercialized
----------------	----------------

For the latest information check <http://wibe-group.com/cable-support-systems/cantilever-arm-50-200-aisi316>