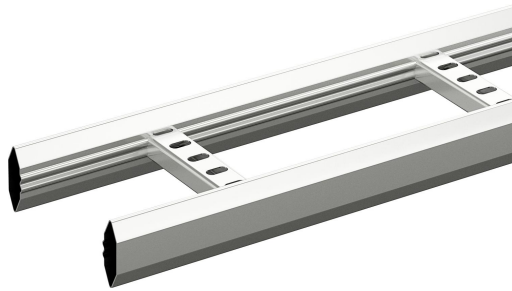


Cable ladder KHZP-150 6m Hdg

Reference 718562



Activity
Product family
Brand
Range

Cable support systems
Cable ladders
Wibe
KHZP

Commercial and Web

Short description	Cable ladder KHZP-150 6m HDG
Medium description	Wibe - cable ladder - KHZP-150 - closed side profiles and perforated rungs - 6 m - steel hot-dip galvanized
Keyword	718562, Wibe Cable Ladders
Length	6000
Width	150
Height	55
Material	Steel
Material type or surface treatment	Hot-dip galvanized
Corrosion class	C1; C2; C3; C4

Base

Activity	Cable support systems
Product family	Cable ladders
Brand	Wibe
Range	KHZP
GTIN	7321677185627

ETIM (EC000854-Cable ladder/wide span cable ladder)

Type of side joist (EF007666)	Tube shape (closed)
Side wall perforation (EF001122)	No
Type of rung (EF001060)	Perforated profile
Fixation rung (EF008307)	Welded
Height (EF000040)	55 mm

Width (EF000008)	150 mm
Length (EF001438)	6000 mm
Useful cross section (EF005140)	13320000 mm²
Rung centre spacing (EF008185)	250 mm
Wide span model (EF006397)	No
Suitable for circuit integrity (EF007806)	No
Material (EF002169)	Steel
Material quality (EF001257)	*
Surface protection (EF000139)	Hot-dip galvanized
Colour (EF000007)	*
RAL (EF000116)	*
Max. safe working load according to IEC 61537 (EF016305)	* N/m
Span between supports according to IEC 61537 (EF015363)	* mm
Load test type according to IEC 61537 (EF015362)	*
Weight (EF000167)	2.7 kg/m

Logistic

Pack 1 type	Each
Quantity pack 1	1
Weight pack 1	16.2
Length pack 1	6000
Width pack 1	147
Height pack 1	55
GTIN pack 1	7321677185627
Pack 4 type	Pallet
Quantity pack 4	30
Weight pack 4	486
Length pack 4	6000
Width pack 4	340
Height pack 4	580
Customs code	73089059
Country of origin	SE

Certification

ETIM class	EC000854
------------	----------

Status product

Product status	Commercialized
----------------	----------------

For the latest information check <http://wibe-group.com/cable-support-systems/cable-ladders/wibe-cable-ladders/length-material/cable-ladder-khzp-150-6m-hdg>