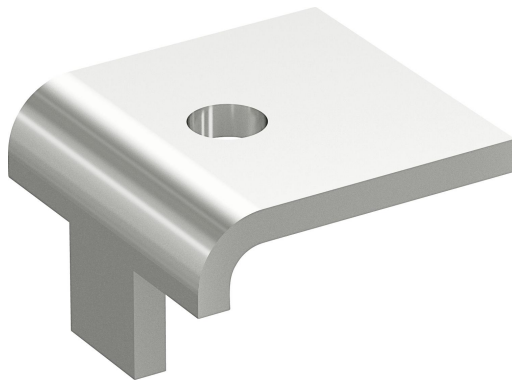


Beam clamp 5BK-10 Hdg

Reference 715675



Activity
Product family
Brand

Cable support systems
Support system
Wibe

Commercial and Web

Short description	Beam clamp 5BK-10 Hdg
Medium description	Wibe - beam clamp 5BK-10 - steel hot-dip galvanized
Keyword	715675, Wibe Cable Ladders
Material	Steel
Material type or surface treatment	Hot-dip galvanized
Corrosion class	C1; C2; C3; C4

Base

Activity	Cable support systems
Product family	Support system
Brand	Wibe
GTIN	7321677156757

ETIM (EC000464-Fixing clamp)

Type of fastening (EF002442)	Screwing
Connection type construction part (EF004374)	Clamp
Thread size (metric) (EF003563)	*
Suitable for flange thickness (EF006596)	14-30 mm mm
Tube/cable diameter (EF005214)	* mm
Hinging (EF001076)	No

Hinge adjustable (EF002645)	No
Material (EF002169)	Steel
Material quality (EF001257)	*
Surface protection (EF000139)	Hot-dip galvanized
Breaking load (EF004571)	7500 N

Logistic

Quantity pack 1	1
Weight pack 1	0.122
Length pack 1	50
Width pack 1	50
Height pack 1	30
Customs code	73089059
Country of origin	SE

Certification

ETIM class	EC000464
------------	----------

Status product

Product status	Commercialized
----------------	----------------
