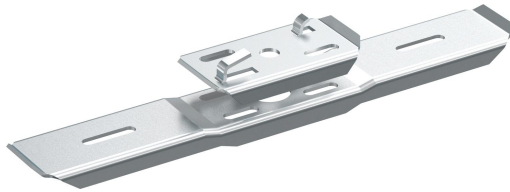


Support hook B39/320-422 EG

Reference 1149118



Activity
Product family
Brand
Range

Cable support systems
Support system
Defem
Defem

Commercial and Web

Short description	Support hook B39/320-422 EG
Medium description	Defem - support hook B39/320-422 - steel electro-galvanized
Keyword	1149118, Defem Mesh Trays
Material	Steel
Material type or surface treatment	Electro-galvanized
Corrosion class	C1

Base

Activity	Cable support systems
Product family	Support system
Brand	Defem
Range	Defem
GTIN	7332227011181

ETIM (EC000022-Bracket for cable support system)

Length (EF001438)	290 mm
Width (EF000008)	49 mm
Height (EF000040)	25 mm
Suitable for cable management system width (EF008339)	320-422 mm
Model (EF000010)	Clamping console
Angle (EF005434)	* °
Load bearing capacity (EF002918)	* kN
Suitable for circuit integrity (EF007806)	No
Material (EF002169)	Steel
Material quality (EF001257)	Other

Surface protection (EF000139)	Galvanic/electrolytic zinc plated
Colour (EF000007)	*
RAL (EF000116)	*

Logistic

Pack 1 type	Each
Quantity pack 1	1
Weight pack 1	0.33
Length pack 1	285
Width pack 1	50
Height pack 1	25
Pack 4 type	Pallet
Quantity pack 4	2880
Weight pack 4	990
Length pack 4	1200
Width pack 4	800
Height pack 4	1050
Customs code	73089098
Country of origin	SE

Certification

ETIM class	EC000022
REACH declaration	No
REACH date	3/7/2021 11:00:00 PM +00:00

Status product

Product status	Commercialized
----------------	----------------

For the latest information check <http://wibe-group.com/cable-support-systems/mesh-trays/defem-mesh-trays/cantilevers-csb/support-hook-b39-320-422-zinc-plated>