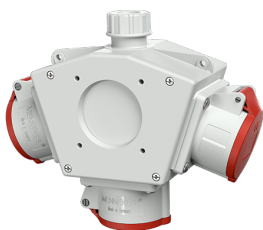


## DELTA-BOX receptacle combination

Part no. 92917

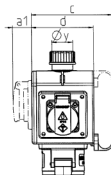
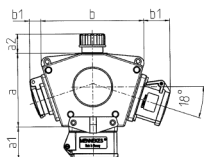


- pre-wired for installation
- with internal strain relief and installed hanging hook
- enclosure and insert made of **AMAPLAST**

## Technical specifications

|                           |   |
|---------------------------|---|
| CEE 16 A, 5 p, 400 V      | 3   |
| Connection / feeder cable | • for 1 cable up to 5 x 6 mm <sup>2</sup> |
| Protection type           | IP44                                      |
| Shutter                   | false                                     |
| Enclosure material        | Plastic                                   |
| Weight                    | 1019 g                                    |
| Declaration of Conformity | EAC, CQC                                  |

## Drawing



| Pos. | Receptacles          | IP-degrees | Dim.         |
|------|----------------------|------------|--------------|
| a    |                      |            | 114.0 mm     |
| a1   | SCHUKO®, 16 A, 230 V | IP 44      | max. 30.0 mm |
| a1   | CEE 16 A, 3 p, 230 V | IP 44      | 52.7 mm      |
| a1   | CEE 16 A, 5 p, 400 V | IP 44      | 50.5 mm      |
| a1   | CEE 32 A, 5 p, 400 V | IP 44      | 64.0 mm      |
| a2   |                      |            | 30.0 mm      |
| b    |                      |            | 160.0 mm     |
| b1   | SCHUKO®, 16 A, 230 V | IP 44      | max. 18.0 mm |
| b1   | CEE 16 A, 3 p, 230 V | IP 44      | 42.0 mm      |
| b1   | CEE 16 A, 5 p, 400 V | IP 44      | 40.0 mm      |
| b1   | CEE 32 A, 5 p, 400 V | IP 44      | 53.2 mm      |
| c    |                      |            | 133.0 mm     |
| d    |                      |            | 97.0 mm      |
| y    |                      |            | 17.0 mm      |