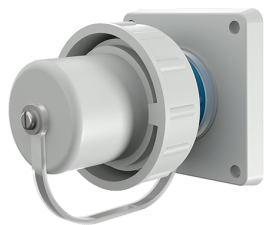


Panel mounted inlet SCHUKO®
Part no. 10852

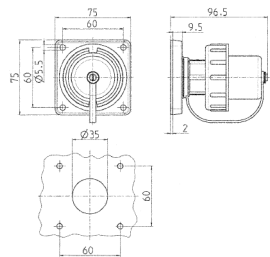


- screw terminals
- with combined PE-conductor acc. to german and french-belgian standard
- with bayonet ring
- protective cap attached by a strap

Technical specifications

Ampere	16 A
Poles	2 p+E
Voltage	230 V
Connection technology	Screw terminals
Contact	standard
Protection type	IP 68
Shutter	false
Flange	75x75 mm
Fixing hole	60x60 mm
Weight	138 g
Declaration of Conformity	VDE, EAC

Drawing



Drawing
2 MB 164
Dim. in mm