

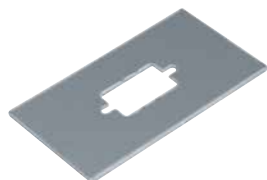
GTVDM224

**Mounting plate**

**Properties:**

- Metal mounting plate for SC-Duplex-type fibre-optic equipment, installation opening 9.7 x 26 mm

Designation	PU	Order no.
Mounting plate data 4-f LWL 9.7x26	1	<b>GTVDM224</b>



GTVDM301

**Mounting plate**

**Properties:**

- Metal mounting plate for data equipment, audio or video equipment type D-Sub 9, installation opening 12.8 x 21 mm

Designation	PU	Order no.
Mounting plate f. audio/video D-Sub9 12.8x21	1	<b>GTVDM301</b>



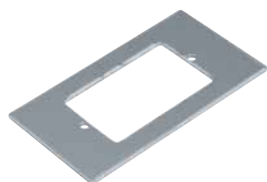
GTVDM311

**Mounting plate**

**Properties:**

- Metal mounting plate for audio equipment type XLR, installation opening Ø 24 mm

Designation	PU	Order no.
Mounting plate f. audio XLR diam. 24mm	1	<b>GTVDM311</b>



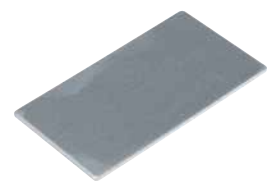
GTVDM331

**Mounting plate**

**Properties:**

- Metal mounting plate for Kindermann multimedia connecting modules, installation opening 25 x 39 mm

Designation	PU	Order no.
Mounting plate for multimedia 25x39mm	1	<b>GTVDM331</b>



GTVDM00B

**Mounting plate**

**Eigenschaften:**

- Mounting plate, metal, blank for covering unused bevelled ducts

Designation	PU	Order no.
Mounting plate blank for GTVD200/300	1	<b>GTVDM00B</b>