

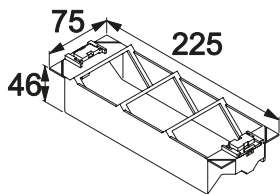


GTVD300

**Device carrier for 3 mounting plates for data equipment**

**Properties:**

- Device carrier for service units VQ12, VR12 or VR10 (centre)
- Accepts 3 mounting plates for data or media equipment
- Dimensions: 46 x 75 x 225 mm (H x W x L)
- Assembly type: snap-in, with latch
- Minimum installation depth: 70 mm with 5 mm flooring recess in the cover of the service unit
- Minimum installation depth: 77 mm with 12 mm flooring recess in the cover of the service unit
- Material: PC/ABS, halogen-free
- Delivery colour: RAL 9011, graphite black



Designation	PU	Order no.
Device carrier f. 3 mount. pl. f. data equ.	1	<b>GTVD300</b>

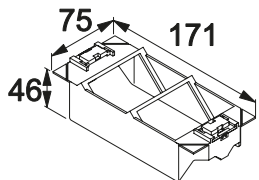


GTVD200

**Device carrier for 2 mounting plates for data equipment**

**Properties:**

- Device carrier for service unit VQ06, VR06 or VR10 (left and right)
- Accepts 2 mounting plates for data or media equipment
- Dimensions: 46 x 75 x 171 mm (H x W x L)
- Assembly type: snap-in, with latch
- Minimum installation depth: 70 mm with 5 mm flooring recess in the cover of the service unit
- Minimum installation depth: 77 mm with 12 mm flooring recess in the cover of the service unit
- Material: PC/ABS, halogen-free
- Delivery colour: RAL 9011, graphite black



Designation	PU	Order no.
Device carrier f. 2 mount. pl. f. data equ.	1	<b>GTVD200</b>



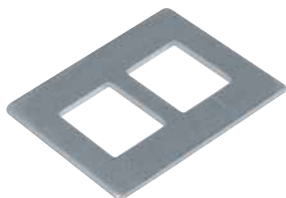
EDSRJ45C6A

**Data module RJ45 Cat.6a**

**Properties:**

- Data module Rutenbeck UMflex-real. Cat.6a in shielded (S) and on shielded versions (U)
- Can be used in connection with mounting plate GTVDM013 in device carrier GTVD300 or GTVD200

Designation	PU	Order no.
Data module Cat.6a shielded	1	<b>EDSRJ45C6A</b>
Data module Cat.6a unshielded	1	<b>EDURJ45C6A</b>



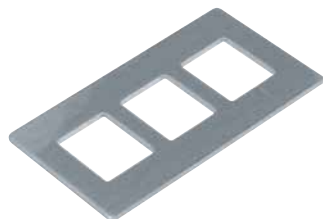
GTVDM012

**Mounting plate**

**Properties:**

- Mounting plate, double, metal, for data equipment with installation opening: 19.3 x 14.8 mm, e.g. Rutenbeck

Designation	PU	Order no.
Mounting plate GTVD2/300 2xRJ45 19,3x14,8	1	<b>GTVDM012</b>



GTVDM013

**Mounting plate**

**Properties:**

- Mounting plate, triple, metal, for data equipment with installation opening: 19.3 x 14.8 mm, e.g. Rutenbeck

Designation	PU	Order no.
Mounting plate GTVD2/300 3xRJ45 19,3x14,8	1	<b>GTVDM013</b>