

SIRIUS S GEN2



Sirius S Gen2 is the smallest model in the energy-efficient street luminaire series. The updated Sirius luminaire family was designed to suit varying weather conditions. The luminaire family has a sleek and consistent new appearance, and it is easy to keep clean. Sirius' timeless Scandinavian design suits areas built in different time periods. Sirius combines good looks, durable materials and practicality. Sirius S Gen2 luminaires are suitable for various applications, such as urban and residential streets, parks and outdoor/sporting routes.

Benefits

A reliable street luminaire family of clear and uniform design language suitable all the way from parks to streets. High IP66 class combined with durable impact resistant IK09 structure. Wide selection of different lenses covering different lighting needs and pole spacing. The product combines low glare value and low cost of ownership. Constant light output (CLO) as a standard feature.

Suitability

Sidewalks, cycle tracks, parks, streets of residential areas and hiking tracks. The luminaire is suitable also for area and facade lighting.

Product families and variants

Product code	Product family code	Initial CLO power consumption	Average CLO power consumption	End CLO power consumption	Luminous flux	Luminaire Efficacy	Lifetime	Operating temperature	Optical Safety Distance ¹⁾
SIRIUS S GEN2	GLS2G2S-20, GLS2G2S4-20	20 W	20 W	20 W	2730 lm	137 lm/W	L99B10, C10 100 000 h	-40 - +45°C	
SIRIUS S GEN2	GLS2G2S-40, GLS2G2S4-40	38 W	39 W	40 W	4600 lm	121 lm/W	L96B10, C10 100 000 h	-40 - +45°C	2,3 m ¹⁾
SIRIUS S GEN2	GLS2G4S-35	35 W	35 W	35 W	4750 lm	136 lm/W	L99B10, C10 100 000 h	-40 - +45°C	
SIRIUS S GEN2	GLS2G4S-65	62 W	64 W	65 W	7700 lm	126 lm/W	L95B10, C10 100 000 h	-40 - +35°C	2,3 m ¹⁾

Notes:

All values in ambient temperature of +25°C with CCT 4000K and light distribution S02, luminous flux tolerance +-5%, output power tolerance +-3%.

1) The luminaire should be positioned so that prolonged staring into the luminaire at a distance closer than 2.3 m can not be expected.

Dimensions

PRODUCT CODE	PRODUCT FAMILY CODE	LENGTH (L)	HEIGHT (H)	WIDTH (W)	WEIGHT
SIRIUS S GEN2	GLS2G2S-20, GLS2G2S4-20	402 mm	75 mm	235 mm	4,3 kg
SIRIUS S GEN2	GLS2G2S-40, GLS2G2S4-40	402 mm	75 mm	235 mm	4,3 kg
SIRIUS S GEN2	GLS2G4S-35	402 mm	75 mm	235 mm	4,3 kg
SIRIUS S GEN2	GLS2G4S-65	402 mm	75 mm	235 mm	4,3 kg

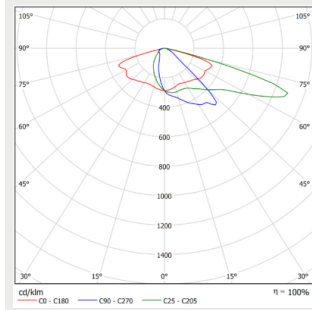
General Description

COLOUR TEMPERATURE:	3000 K, 4000 K, 5000 K
COLOUR RENDERING INDEX:	$R_A \geq 70$
IP CLASS:	IP66
IK CLASS:	IK09
SUPLY VOLTAGE:	120-277 Vac
FREQUENCY:	50-60 Hz
PF:	>0.9
THD:	<10%

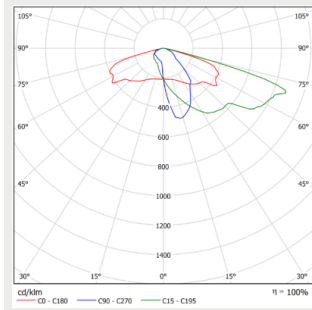
OVERVOLTAGE PROT.:	10kV L/N-Ground & SD-Ground
CONNECTION:	Luminaire internal terminal block, installation cable as an option.
DIMMABILITY:	ON/OFF, StepDIM, AstroDIM, DALI, MainsDIM, SLC as on option
COLOUR:	RAL9006, other RAL colours as an option
MATERIAL OF THE LUMINAIRE BODY:	Aluminium
GUARANTEE:	8 years
ACCESSORIES (INSTALLATION):	Tube bracket, T-adapter, Pole adapter diam 76 mm -> 60 mm, Ceiling bracket, Wall bracket

Light distribution

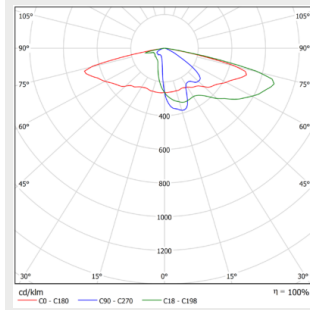
SIRIUS S 01 1v1 up to 40W



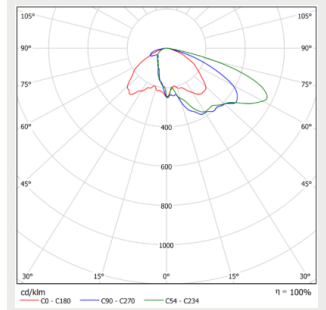
SIRIUS S 02 1v1 up to 40W



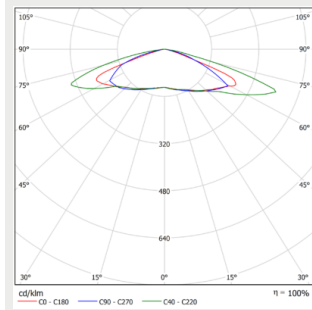
SIRIUS S 07 1v1 up to 40W



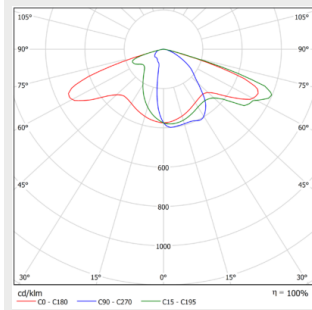
SIRIUS S 08 1v1 up to 40W



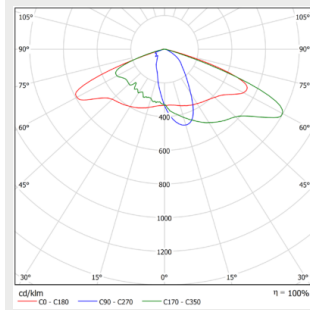
SIRIUS S 09 1v1 up to 40W



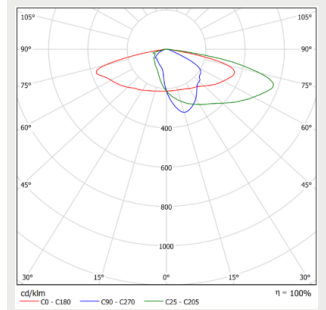
SIRIUS S 13 1v1 up to 40W



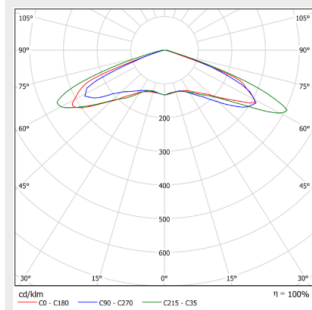
SIRIUS S S02 1v1



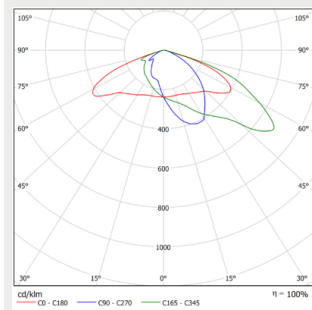
SIRIUS S S07 1v1



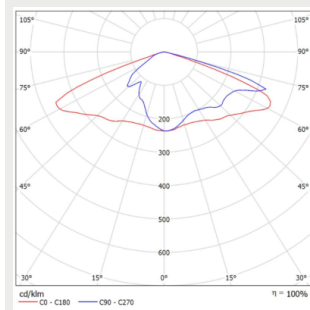
SIRIUS S S09 1v2



SIRIUS S S11 1v2

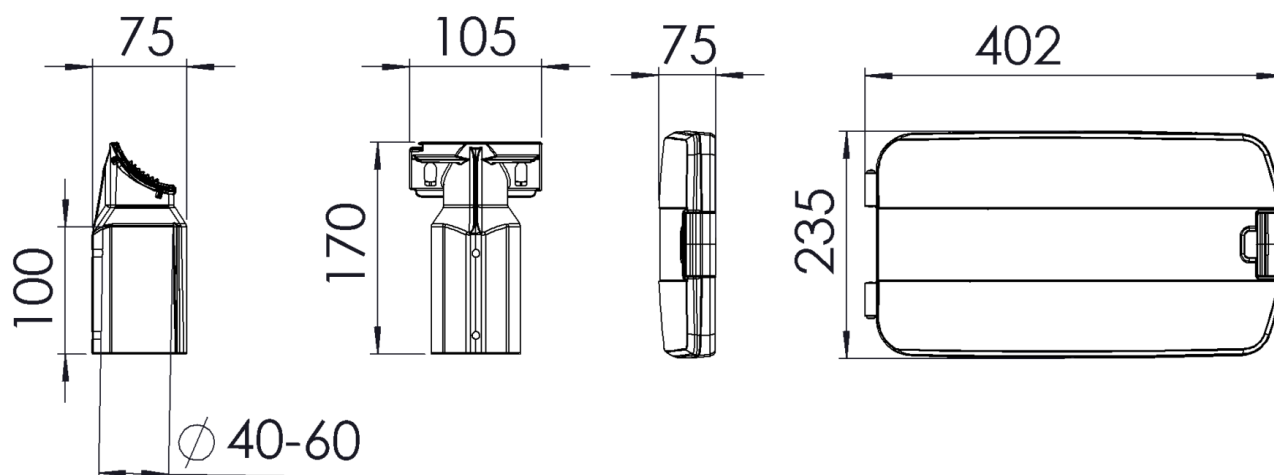


SIRIUS S S14 1v1



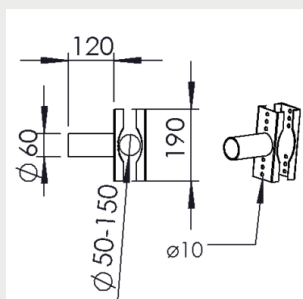
Dimensions

Dimensional drawing

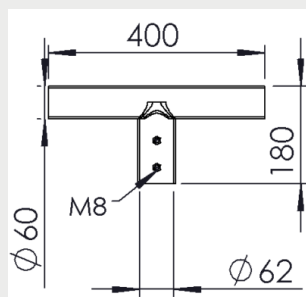


Brackets

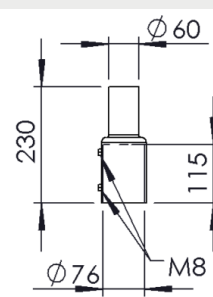
Tube bracket



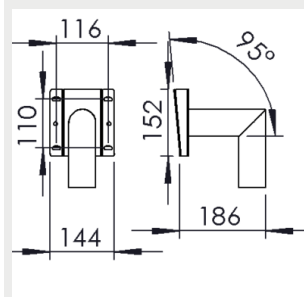
T-adapter



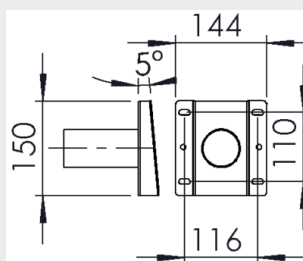
Pole adapter diam 76 mm -> 60 mm



Ceiling bracket



Wall bracket



Circuit breakers

	B10	B16	B20	C10	C16
SIRIUS 2S GEN2, SIRIUS 4S GEN2 < 45 W	10	17	20	16	27
SIRIUS 4S GEN2 > 44 W	7	12	14	11	18

CUSTOMER SERVICE:

tel: +358 20 125 5800

info@greenled.fi