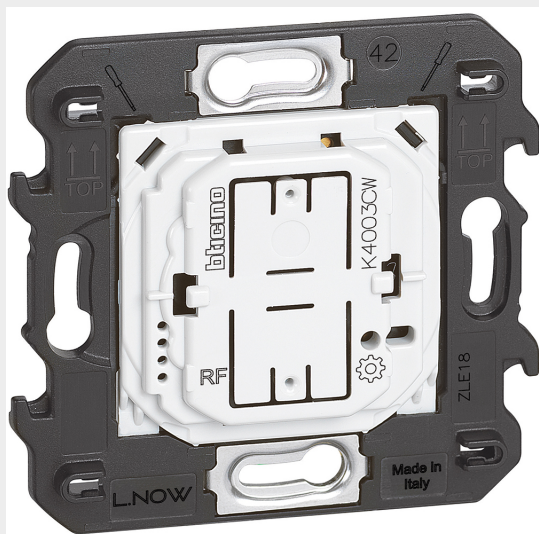


BTICINO > Wiring devices > Living Now > Living Now SMART - Modular version > Wireless controls for light and shutter







## K4003CW

Wireless light control. It provides ON/OFF control of one or more devices connected for light control. Surface installation with repositionable adhesives (supplied as standard), or inside flush mounted boxes. Built-in battery exhausted LED. CR2032 type 3 V power battery with 8 year expected life supplied (as standard) - 2 modules

## Technical features

N° of modules	2
Rated voltage	3V c.c.
Series	Living Now

## Documentation

-  [Technical data sheet](#)
-  [Instruction sheet](#)
-  [Instruction Sheet](#)
-  [Living Now english catalogue](#)

## Related products



### KW42M2

Lightable covers, for wireless light control item K4003CW. 2 modules - white



### KG42M2

Lightable covers, for wireless light control item K4003CW. 2 modules - black



### KM42M2

Lightable covers, for wireless light control item K4003CW. 2 modules - sand



### K4500C

Gateway for remote home control (lights, sockets and shutters) using a smartphone (HOME + CONTROL AP...)



### 3584C

Connected light relay. It controls the lights locally or remotely. It's compatible with all loads wi...



### K4003C

Connected two-way switch. It controls the lights locally or remotely. It can be installed like a tra...