

Category 6 Cabling Solutions

C6
CAT6PLUS

Brand-Rex 



A trusted voice in a world of confusion

Brand-Rex has developed the enviable position of being Europe's premier, home based provider of 'best in class' communication infrastructure solutions. This position has been gained through a core philosophy of delivering maximum performance through design excellence. With a reputation as one of the most respected expert voices within the technical community, Brand-Rex has built a business and product ethos around trust. A high level of knowledge, experience and integrity, developed during three decades of networking deployment, allows Brand-Rex to consistently deliver first class solutions and a first class service to customers.

Cat6Plus

Cat6Plus is the Brand-Rex premium performance Class E / Category 6 structured cabling system. It is one of the best performing Category 6 / Class E cabling solution on the market today. Cat6Plus provides a stable and reliable platform to run LAN applications up to Gigabit speeds, distribute video and support PoE. Cat6Plus is the preferred choice of local, national and international businesses seeking superior performance and security from a communications infrastructure.

Complete, end to end, solutions

Brand-Rex offers complete, end to end, shielded and unshielded, structured cabling solutions.

The comprehensive range of cables, patch cords, panels and outlet connector options within the Cat6Plus range provides an unrivalled level of flexibility to support networks in any environment. The shielded solutions provide ultimate protection in electrically noisy environments whilst the unshielded system offers simple deployment in the relatively benign general office. Cat6Plus is the ideal choice for installation in any location, including:

- data centre
- general office
- industrial
- residential

The Cat6Plus range has been designed for ease of installation and operation. The connectors are available in standard punchdown or installation friendly, tool-free termination.

Performance and Standards compliance

The Cat6Plus system delivers a very high electrical performance and guarantee compliance with the Class E /Category 6 published standards as an absolute minimum. The Cat6Plus cabling systems support all protocols defined in current editions of ISO 11801:2002, ANSI/TIA/EIA 568B.2.1 : 2002 and EN50173-1:2002 and are fully backward compatible to Class D.

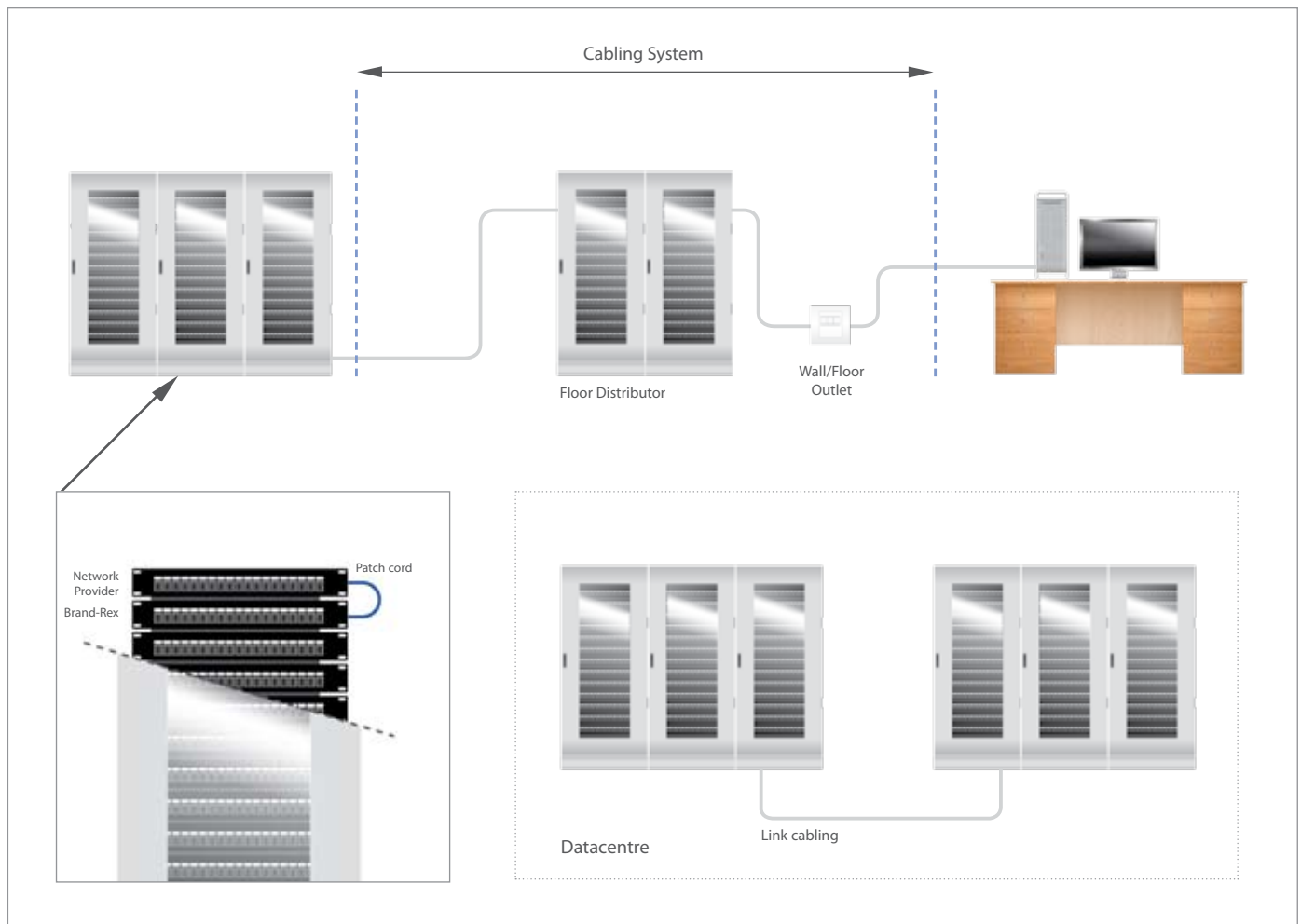


Warranty

Cat6Plus is covered under the highly valued Brand-Rex 25 year warranty scheme. The Brand-Rex warranty is unrivalled in the field providing the highest assurance of installation quality and application performance.

Cat6Plus – the highest quality, highest performance Cat6 cabling system.

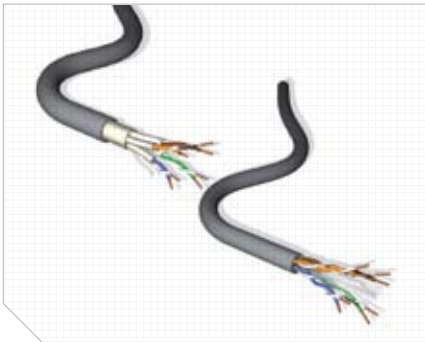
APPLICATIONS



Channel Performance

Frequency (MHz)		1	4	10	16	20	31.25	62.5	100	125	155	175	200	250	350	500	550
Attenuation (dB)	Typical	1.9	3.5	5.5	7.0	7.8	9.8	14.2	18.4	20.8	23.4	25.0	27.0	30.6	37.2	45.9	48.6
	Spec	2.1	4.0	6.3	8.0	9.0	11.4	16.5	21.3	24.1	27.2	29.2	31.5	35.9	-	-	-
NEXT (dB)	Typical	80.7	71.0	64.6	61.2	59.6	56.4	51.4	47.9	46.3	44.7	43.8	42.8	41.1	35.6	32.9	-
	Spec	65.0	63.0	56.6	53.2	51.6	48.4	43.4	39.9	38.3	36.7	35.8	34.8	33.1	-	-	-
PSNEXT (dB)	Typical	78.6	68.8	62.3	58.9	57.2	54.0	48.8	45.3	43.6	42.0	41.1	40.1	38.3	32.8	30.0	-
	Spec	62.0	60.5	54.0	50.6	49.0	45.7	40.6	37.1	35.4	33.8	32.9	31.9	30.2	-	-	-
Return Loss (dB)	Typical	28.0	25.0	23.0	22.0	21.5	20.5	19.0	18.0	17.5	17.0	16.8	16.5	16.0	15.3	14.5	-
	Spec	19.0	19.0	19.0	18.0	17.5	16.5	14.0	12.0	11.0	10.1	9.6	9.0	8.0	-	-	-
ELFEXT (dB)	Typical	78.3	66.2	58.3	54.2	52.2	48.4	42.3	38.3	36.3	34.5	33.4	32.2	30.3	22.4	19.3	-
	Spec	63.3	51.2	43.3	39.2	37.2	33.4	27.3	23.3	21.3	19.5	18.4	17.2	15.3	-	-	-
PSELFEXT (dB)	Typical	75.3	63.2	55.3	51.2	49.2	45.4	39.3	35.3	33.3	31.5	30.4	29.2	27.3	19.4	16.3	-
	Spec	60.3	48.2	40.3	36.2	34.2	30.4	24.3	20.3	18.3	16.5	15.4	14.2	12.3	-	-	-
Propagation Delay (ns)	Typical	520	505	500	500	500	500	500	500	500	500	500	500	500	500	500	500
	Spec	580	562	555	553	552	550	549	548	547	547	547	547	546	-	-	-
Delay Skew (ns)	Typical	<30	<30	<30	<30	<30	<30	<30	<30	<30	<30	<30	<30	<30	<30	<30	<30
	Spec	<50	<50	<50	<50	<50	<50	<50	<50	<50	<50	<50	<50	<50	-	-	-
ACR (dB)	Typical	78.8	67.6	59.1	54.3	51.8	46.6	37.2	29.6	25.5	21.3	18.7	15.8	10.5	-1.6	-13.1	-
	Spec	62.9	59.0	50.2	45.2	42.6	37.0	26.9	18.6	14.2	9.51	6.6	3.3	-2.8	-	-	-
PSACR (dB)	Typical	76.7	65.3	56.8	51.9	49.4	44.1	34.6	26.9	22.9	8.6	16.0	13.1	7.7	-4.5	-15.9	-
	Spec	59.9	56.5	47.7	42.6	39.9	34.3	24.1	15.8	11.3	6.6	3.7	0.3	-5.8	-	-	-

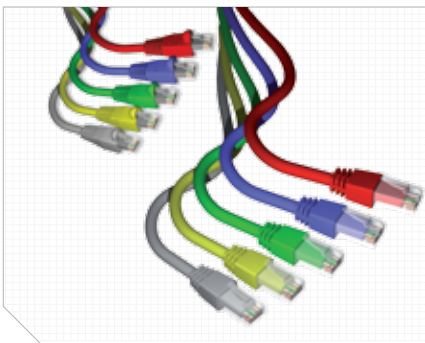
CAT6PLUS PRODUCT RANGE

**Cables**

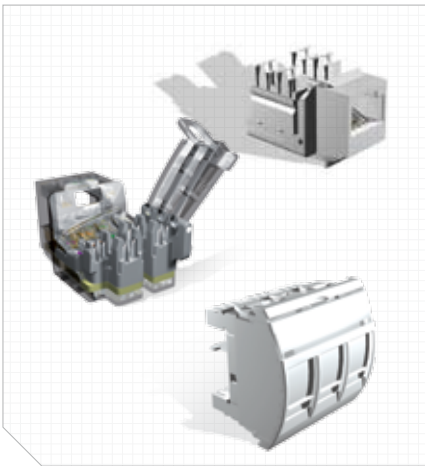
A range of premium grade shielded and unshielded Class E / Category 6 cables to support Gigabit Ethernet protocols. For installation in horizontal or building backbone areas. Available as F/FTP, S/FTP, U/FTP and U/UTP.

Cables comply to:

- ISO/IEC 11801:2002
- ISO/IEC 61156-5
- EN50173-1:2002
- EN50288-6-1
- ANSI/TIA/EIA 568B.2.1:2002

**Patch Cords**

All Brand-Rex patch cords employ independently verified Class E / Category 6 cable, and are manufactured using standards' compliant RJ-45 modular plugs. Cat6Plus patch cords are available in shielded or unshielded construction and with stranded or solid core. A blade patch cord option is available for high density patching applications. Our factory-made and tested patch cords offer you guaranteed quality and superior performance and carry a no quibble guarantee.

**Unshielded Snap-in-Jacks & Outlets****Tool-free Jack**

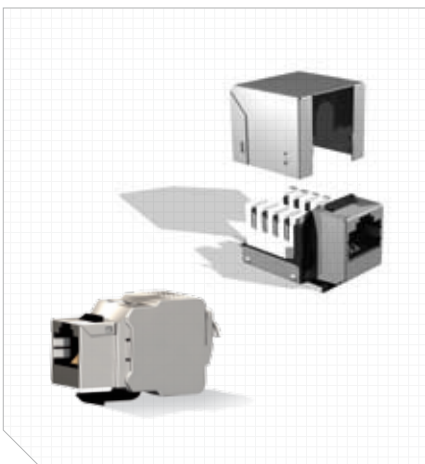
- Innovative curved lever, designed for easy, quick and efficient product termination
- New unique pointed pillar lacing system for faster termination – halves the time
- Translucent lever allows for easy after termination inspection

Snap-in-Jack

- Patented contact array providing enhanced electrical performance
- Rear or top entry cable configuration for maximum flexibility
- Robust LSA style IDC design ensures maximum performance from punch down connections

Triple Outlet

- High Density outlet solution - up to three shuttered RJ45 outlets in a single module

**Shielded Snap-in-Jacks****Snap-in-Jack**

- Patented contact array providing enhanced electrical performance
- Robust LSA style IDC design ensures maximum performance from punch down connections
- Improved engagement ensuring positive locating force in panels and outlets

Keystone Snap-in-Jack

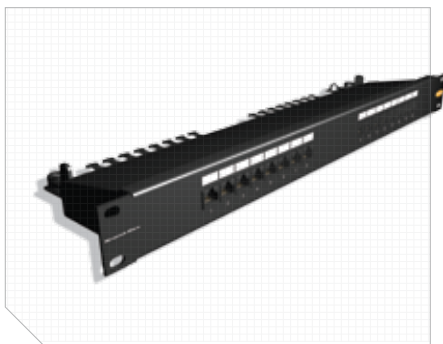
- Metal housing designed to provide a superior electromagnetic shielding performance
- 250MHz component performance
- Quick tool free wire termination
- Fully compatible with all our UK and continental style faceplates



Snap-in-Jack Patch Panels

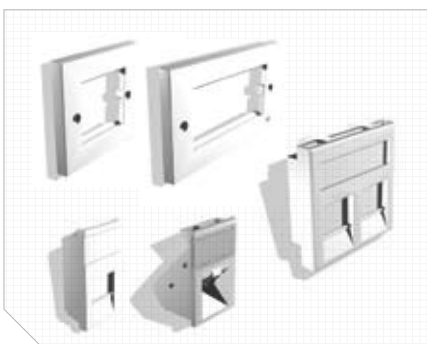
We offer a range of Cat6Plus Snap-in-Jack panels including a unique Angled Panel.

- All panels are compatible with all standard 19 inch racks and cabinets and offer as standard, full port numbering and individual pre-printed port labelling area
- Proven robust steel construction for superior structural rigidity
- Angled Panel facilitates cord routing directly into the rack thereby saving space and easing bending stress



Patch Panels

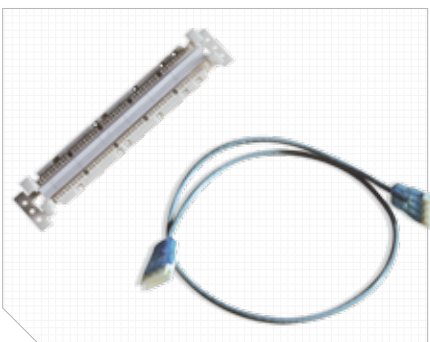
- True category 6 performance using a patented contact pin array design
- Individually shielded modular jacks provide superior performance
- Built in cable management and strain relief system
- All outlets numerically identified with an additional writable surface for ease of port naming



Modules and Faceplates

Brand-Rex supplies a comprehensive range of plastic accessories to provide an outlet solution for wall, trunking and floor box applications. We supply a full range of European and UK faceplates.

For the full range of copper accessories please see our catalogue.



110 Cross Connect

- High performance, Cat6, UTP, cross-connect system
- Small footprint cross-connect
- Wall mounted or rack mounted options
- 48, 96, 192 or 288 pair versions
- Product set includes: mounting frames, wiring bases, connector blocks, 4 pair punchdown tools and patch cords
- Patch cords available in either 110 to 110, or, 110 to RJ45
- Colour codes and labels for easy identification

For the full range of 110 Cross Connect Accessories please see our catalogue

CAT6PLUS PRODUCT PART NUMBERS

Cables

	PVC	LSOH - HF1	LSOH - HF3
U/UTP, 100 Ω, 4x2xAWG 23/1 Cable	C6U	C6U - HF1	C6U - HF3
U/FTP, 100 Ω, 4x2xAWG 23/1 Cable	C6U/FTP	C6U/FTP - HF1	C6U/FTP - HF3
F/FTP, 100 Ω, 4x2xAWG 23/1 Cable	C6F/FTP	C6F/FTP - HF1	C6F/FTP - HF3
S/FTP, 100 Ω, 4x2xAWG 23/1 Cable	C6STP	C6STP - HF1	C6STP - HF3

Availability

305m Box	500m Reel	1000m Reel
✓	✓	✓
-	✓	✓
-	✓	✓
-	✓	✓

Patch Panels

	16 Port	24 Port
Unshielded Panel LSA Style - Black	C6CPNLU160K2M	C6CPNLU240K2M
Unshielded Panel LSA Style - Grey	C6CPNLU160K8M	C6CPNLU240K8M
Unshielded Panel 110 Style - Black	C6CPNLU16012M	C6CPNLU24012M
Unshielded Panel 110 Style - Grey	C6CPNLU16018M	C6CPNLU24018M
Shielded Panel LSA Style - Black	C6CPNLF160K2M	C6CPNLF240K2M
Shielded Panel LSA Style - Grey	C6CPNLF160K8M	C6CPNLF240K8M
Angled Snap-in-Jack Panel - Black	-	MMCPNLX24SJ2MAN
Coloured Insert Snap-in-Jack Panel - Black	-	MMCPNLX24SJ2CII
Coloured Insert Snap-in-Jack Panel - Grey	-	MMCPNLX24SJ8CII
24 Port Inline Snap-in-Jack Panel - Black	-	MMCPNLX24SJ2MIL
24 Port Inline Snap-in-Jack Panel - Grey	-	MMCPNLX24SJ8MIL

Snap-in-Jacks

	Unshielded	Shielded
Snap-in-Jack LSA Style - Black	C6CJAKU0K2	C6CJAKF0K2
Snap-in-Jack LSA Style - White	C6CJAKU0K3	-
Snap-in-Jack 110 Style - Black	C6CJAKU012	-
Snap-in-Jack 110 Style - White	C6CJAKU013	-
Tool-free Jack - Grey	C6CJAKU002	-
Shielded Keystone Jack	-	C6CTAK5000CR

Patch Cords

	Red	Blue	Green	Yellow	Grey
Unshielded					
UTP Patch cord 24 AWG U/UTP - 1.0m	C6CPCU010-111BB	C6CPCU010-444BB	C6CPCU010-555BB	C6CPCU010-666BB	C6CPCU010-888BB
UTP Patch cord 24 AWG U/UTP - 2.0m	C6CPCU020-111BB	C6CPCU020-444BB	C6CPCU020-555BB	C6CPCU020-666BB	C6CPCU020-888BB
UTP Patch cord 24 AWG U/UTP - 3.0m	C6CPCU030-111BB	C6CPCU030-444BB	C6CPCU030-555BB	C6CPCU030-666BB	C6CPCU030-888BB
UTP Patch cord 24 AWG U/UTP - 5.0m	C6CPCU050-111BB	C6CPCU050-444BB	C6CPCU050-555BB	C6CPCU050-666BB	C6CPCU050-888BB
Shielded					
UTP Patch cord 27 AWG S/FTP - 1.0m	C6CPCS010-111BB	C6CPCS010-444BB	C6CPCS010-555BB	C6CPCS010-666BB	C6CPCS010-888BB
UTP Patch cord 27 AWG S/FTP - 2.0m	C6CPCS020-111BB	C6CPCS020-444BB	C6CPCS020-555BB	C6CPCS020-666BB	C6CPCS020-888BB
UTP Patch cord 27 AWG S/FTP - 3.0m	C6CPCS030-111BB	C6CPCS030-444BB	C6CPCS030-555BB	C6CPCS030-666BB	C6CPCS030-888BB
UTP Patch cord 27 AWG S/FTP - 5.0m	C6CPCS050-111BB	C6CPCS050-444BB	C6CPCS050-555BB	C6CPCS050-666BB	C6CPCS050-888BB

Patch Cord Part Number Format

C6C – PC – U – 010 – 888 – BB					
C6C Cord Standard	PC Cord Type	010 - Cord Length	888 - Colour Scheme	BB - Speciality Tag	
C6C	Cat6Plus	PC Patch cord	010 1 metre	111 red	BB BladeBoot
			020 2 metre	444 blue	H Standard
			030 3 metre	555 green	HS Standard Solid
			050 5 metre	666 yellow	HX Standard Crossover
				888 grey	
				Non STD cable colours are available upon request	



brand-rex head office
viewfield industrial estate
glenrothes, fife
KY6 2RS
united kingdom

tel: +44 (0) 1592 772124
fax: +44 (0) 1592 775314

brand-rex argentina
c/ingeniero butty 240, piso 4º
(C1001AFB) buenos aires
argentina

tel: +54 11 4590-2242 / 4
fax: +54 11 4590-2201

brand-rex asia pacific
17/F prosperity centre
77-81 container port road
kwai chung
hong kong

tel: +852 3620 2602
fax: +852 3621 0018

brand-rex china
room B105-A23, FESCO building
No. 14 chaoyangmen nandajie
changyang district
beijing
pr china

tel: +852 3620 2602
fax: +852 3621 0018

**brand-rex central &
eastern europe**
millennium tower
handelskai 94-96
1200 wien
austria

tel: +431 24027 512
fax: +431 24027 66510

brand-rex france
120, rue jean jaurès
92 300 levallois perret
france

tel: +33 (0) 1 70 98 78 25
fax: +33 (0) 1 70 98 78 36

brand-rex germany
bunsenstrasse 5
D-51647 gummersbach
germany

tel: +49 (0) 2261 814243
fax: +49 (0) 2261 814909

brand-rex IMEA
PO box 123908
M-3 mezzanine floor
sheikha sana building
sheikh zayed road
al wasl, dubai
united arab emirates

tel: +971 4 321 7525
fax: +971 4 321 7535

brand-rex italy
via giovanni da udine, 34
20156 milano
italy

tel: +39 02 3809 3711
fax: +39 02 30412014

brand-rex london
72 cannon street
london
EC4N 6AE
united kingdom

tel: +44 (0) 207 489 7637
fax: +44 (0) 207 113 2239

brand-rex nordic
mänskensvägen 14A
44340 gråbo
sweden

tel: +46 (0) 704 621950

brand-rex portugal
lagoas park edificio 8 – piso 0
2740-244 porto salvo
portugal

tel: +351 21 421 4133
fax: +351 21 421 4135

brand-rex spain
avenida de la vega, 1
edificio 3, planta 2, oficina 11
28108 alcobendas
madrid, spain

tel: +34 914 905 919
fax: +34 916 573 331

www.brand-rex.com
marketing@brand-rex.com

The information contained in this document is valid and correct at the time of issue.
However, we reserve the right to modify details without notice in the light of subsequent
Standard / Specification changes and ongoing technical developments.
© Brand-Rex Limited 2008

Literature Ref: CAT6PLUS/UK/2 0908

