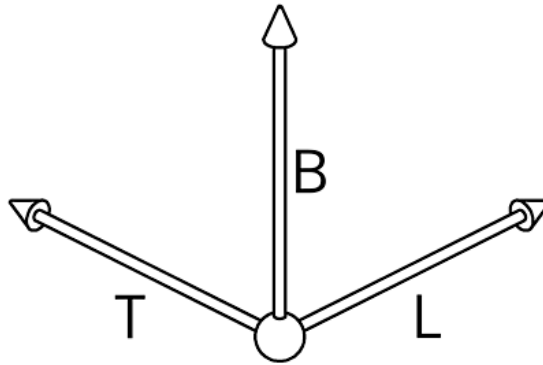
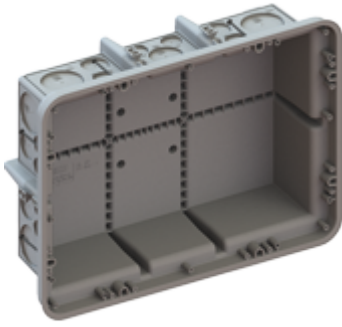


## Transition box



- **Material:** Polyethylene
- **Properties:** non-halogen
- **Processing temperature:** -5°C / + 60°C
- for wood and steel formwork in on-site mixed concrete as well as flush-mounting (masonry) installations
- for vertical formwork attached with adhesive, the casings must be secured with the telescopic support 9957
- Optional accessories: plaster cover, end cover, set of Prefix® wings
- **Length:** 400 mm
- **Width:** 300 mm
- **Depth:** 120 mm
- **Tube entries up to M25:** 16
- **Tube entries up to M32:** 8
- **Tube entries up to M40:** 2
- **Tube entries up to M50:** 8
- **Extensive pull-out apertures:** 10
- **Intake for Prefix:** 6
- **Number of nails:** 8

### **Art. No.:** 9917

- **Inner packaging:** ST
- **Outer packaging:** 10 ST
- **Individual net weight:** 944,060 G
- **Single volume:** 12,002 L
- **EAN:** 7611614261768