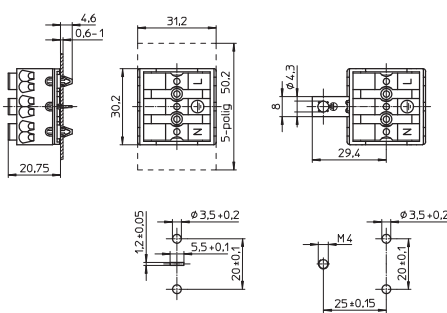


# Starter Holders and Terminal Blocks, Accessories

Terminal blocks  
 Casing: PC, white, T95  
 Nominal rating: 16/250  
 Primary and secondary connection  
 with release button:  
     push-in twin terminals 0.5-1.5 mm²  
     push-in terminals 0.75 mm²  
 Fixing holes for screws M3  
 Base split pins



Type	Ref. No.	Number of poles	Earth-contact connection	Mark	Weight (g)	Unit (pcs.)
40710	<b>509534</b>	3-poles	earth spike	N PE L	13.2	500
40711	<b>530829</b>	3-poles	with earth strap M4	N PE L	14.8	500
40712	<b>529596</b>	3-poles	not earthed	N PE L	13	500
40730	<b>509535</b>	5-poles	earth spike	L3 N PE L1 L2	17.4	500
40731	<b>530831</b>	5-poles	with earth strap M4	L3 N PE L1 L2	19	500

Push-in cord grip  
 For terminal blocks type 407  
 For leads with insulation Ø 9.5-12.5 mm  
 Conductor fixed with screws  
 Material: PC, white  
 Weight: 6.2 g, unit: 500 pcs.  
 Type: 80016  
**Ref. No.: 525893**

