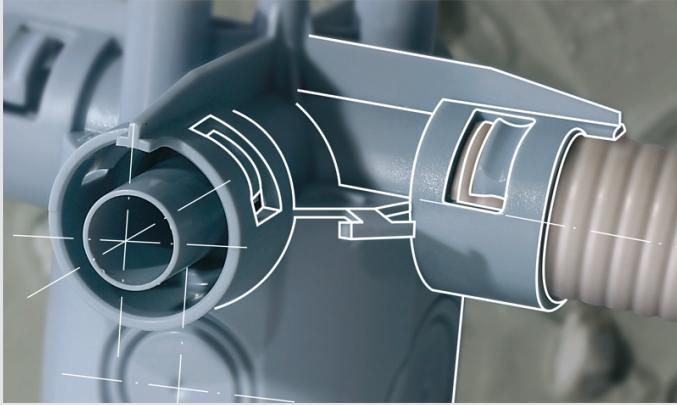


## KSK TECHNOLOGY

KSK technology, KAISER impact coupling for quick, secure and variable conduit entry in concrete construction. Crimped or unsheathed installation conduits with diameters of 20 or 25 mm can be inserted securely and accurately in a single action. You can open the KSK technology with a single hammer blow offering an integrated conduit limit and extension lock for both conduit sizes.



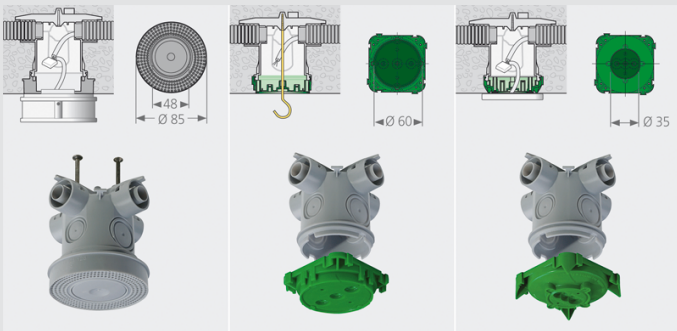
## Universal screw-on surface

The screws for the attachment of the device can be easily screwed into the universal mounting plate.

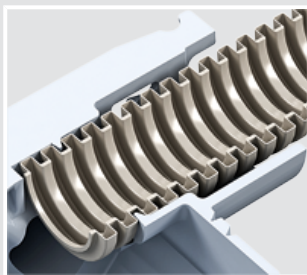


## Front parts

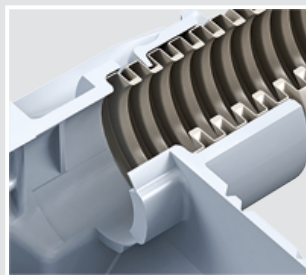
The different front parts offer exit openings of  $\varnothing 35$ ,  $\varnothing 48$  or  $\varnothing 60$  mm and allow the attachment of a fully-insulated light hook according to DIN EN 60670-21.



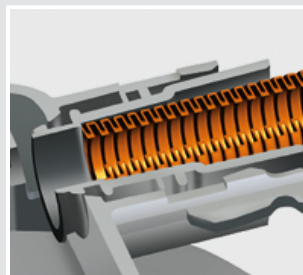
## Combi-entry



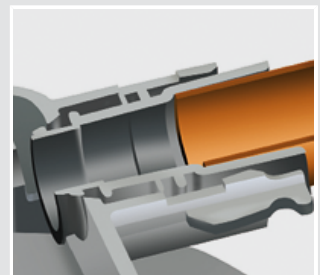
M20 combi-entry



M25 combi-entry



5/8" combi-entry



3/4" combi-entry

## Installation



The front part with screw-on surface (1245-60) offers quick and secure support for accessories.



Open the universal conduit entry with one hammer blow.



You can now insert up to four conduits (M20 or M25).



The front part with screw-on surface (1245-60) offers quick and secure hold for accessories.

## Ceiling junction box

- Conduit entry limit to prevent inside shortening of the conduit
- suitable for all types of formwork
- max. light hooks load in accordance with DIN EN 60670 (50 N)



Depth	99 mm
Exit opening Ø	60 mm
M20/M25 impact couplings	4
M20/M25 break-out opening	2
M25/M32 break-out opening	2
Number of parts	2
Screw domes for device attachment	4
<b>Art. No.</b>	<b>1245-63</b>
Inner packing / shipping	10 / 100