

## E40 Lampholders

**For discharge lamps with base E40**

Nominal rating: 18/500/5 kV

Screw terminals: 1.5–4 mm<sup>2</sup>

Spring loaded central contact

E40 lampholders

Casing: PPS, black, T240

Oblong holes for screws M5

Weight: 111.7/112.1 g, unit: 40 pcs.

Type: 12600/12601

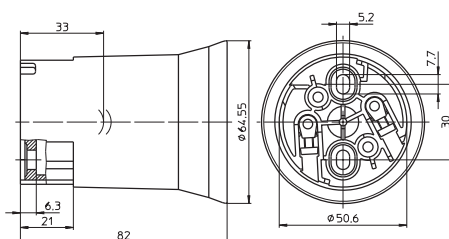
**Ref. No.: 400913**

**Ref. No.: 400914** with lamp safety catch

With steel thread

**Ref. No.: 533428**

**Ref. No.: 533429** with lamp safety catch



E40 lampholders

Casing: PPS, black, T240

Fixing bracket with slots for screws M5

Weight: 122.3/122.7 g, unit: 40 pcs.

Type: 12610/12611

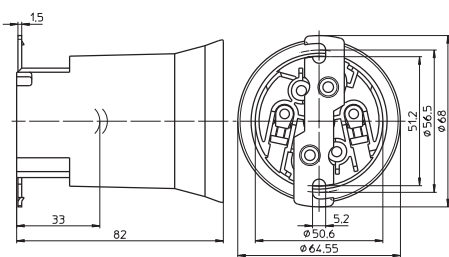
**Ref. No.: 400915**

**Ref. No.: 400916** with lamp safety catch

With steel thread

**Ref. No.: 533430**

**Ref. No.: 533431** with lamp safety catch



E40 lampholders

Casing: PPS, black, T240

Fixing bracket with tapped fixing holes M5

Weight: 122.9/123.3 g, unit: 40 pcs.

Type: 12614/12612

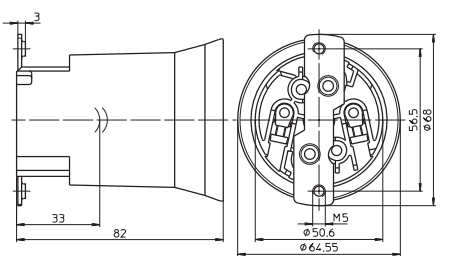
**Ref. No.: 400917**

**Ref. No.: 400918** with lamp safety catch

With steel thread

**Ref. No.: 536220**

**Ref. No.: 533432** with lamp safety catch



E40 lampholders

Casing: porcelain, white, T270

Oblong holes for screws M5

Weight: 224/229.3 g, unit: 48 pcs.

Type: 12800/12801

**Ref. No.: 108208**

**Ref. No.: 107780** with lamp safety catch

With steel thread

**Ref. No.: 532602**

**Ref. No.: 532603** with lamp safety catch

