

G23 lampholder

Casing: PBT GF, white, T140

Nominal rating: 2/250

Push-in terminals: 0.5–1 mm²

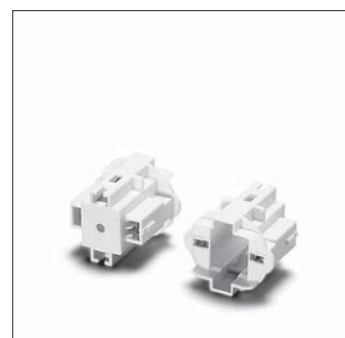
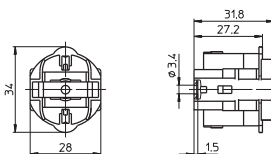
Central fixing hole for screw M3

Particularly suitable for narrow mounting
(e.g. for insertion into tube systems)

Weight: 8.2 g, unit: 500 pcs.

Type: 35202

Ref. No.: 101367



1

2

3

GR8, GR10q, GRY10q-3, GRZ10d, GRZ10t Lampholders

For single-ended compact fluorescent lamps TC-DD

GR8 push-fit lampholder

Casing: PC, white

Nominal rating: 2/250

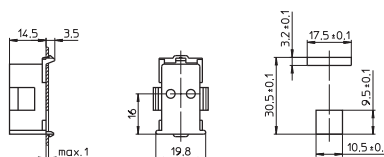
Base and front push-in terminals: 0.5–1 mm²

Fixing clips for wall thickness up to 1 mm

Weight: 5.4 g, unit: 500 pcs.

Type: 35100

Ref. No.: 101358



5

6

GR10q push-fit lampholder

Casing: PC, white, T110

Nominal rating: 2/250

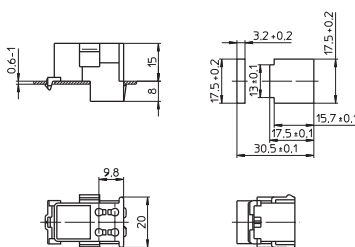
Base push-in terminals: 0.5–1 mm²

Base fixing clip for wall thickness 0.6–1 mm

Weight: 6.2 g, unit: 1000 pcs.

Type: 35500

Ref. No.: 108927



7

8

GR10q push-fit lampholder

Casing: PC, white, T110

Nominal rating: 2/250

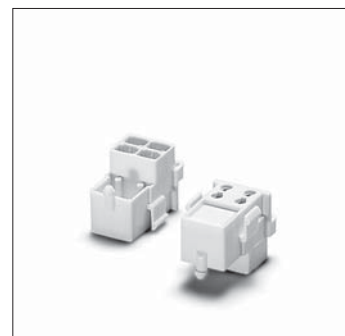
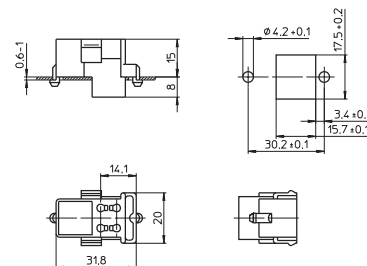
Base push-in terminals: 0.5–1 mm²

Base split pins for wall thickness 0.6–1 mm

Weight: 6.2 g, unit: 1000 pcs.

Type: 35510

Ref. No.: 108928



9

10