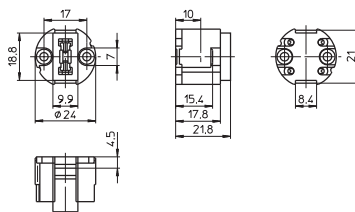


Lampholders for Halogen Incandescent Lamps

G9 lampholder

Casing: ceramic, cover plate: LCP, natural
T270, nominal rating: 2/250
Push-in twin terminals for stranded conductors
with ferrule on bare end of core Ø 1.4–1.8 mm
Fixing holes for screws M3
Weight: 14.4 g, unit: 1000 pcs.
Type: 33500

Ref. No.: 502004



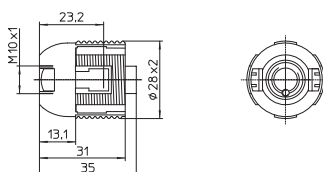
Cover caps for G9 lampholder 502004

Material: LCP, natural
External thread 28x2 IEC 60399
Fixing holes for screws M3
Weight: 8.7/4.6 g, unit: 1000 pcs.
Type: 83310 female nipple: M10x1

Ref. No.: 505951

Type: 97268 moulded thread: M10x1

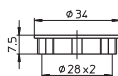
Ref. No.: 501942



Screw ring

For components with external thread 28x2
Material: PPS, black
Ø 34 mm, height: 7.5 mm
Weight: 1.9 g, unit: 1000 pcs.
Type: 05202

Ref. No.: 502503



GU10, GZ10 Lampholders, Accessories

For mains voltage halogen incandescent lamps

GU10, GZ10 lampholders

Casing: LCP, natural, T270, nominal rating: 2/250
Push-in twin terminals for stranded conductors
with ferrule on bare end of core Ø 1.4–1.8 mm
Fixing holes for screws M3
Weight: 7 g, unit: 1000 pcs.
Type: 31000/31010

Ref. No.: 108979 GU10, GZ10 lampholder

Ref. No.: 109007 GU10 lampholder

